



THE OR AMI BEACON

Light of Our People

THIS ISSUE

- Upcoming events P.1
- Rabbi's Ramblings P.2
- President's Message P.3
- High Holidays 2009 P.3
- Religious School News P.4
- Adult Learning P.4
- Torah's Readings P.5
- All in the Family P.6
- Contributions P.7
- Lost & Found P.7
- Yahzreits P.8
- Mission Statement P.8
- Social Action Happenings P.9
- OATY Information P.10
- Fall Kallah Information P.11
- OATY President's Message P.12
- Liturgy Committee P.12
- Community News P.13
- Tree of Life Donation form P.17
- Adult Learning Form P.18
- Contributions Form P.20
- High Holiday Worship Info P.22
- Calendar Fund Raising P.23
- Kesher Israel trip P.24
- Religious School Calendar P.25
- Monthly Calendar P.26

UPCOMING EVENTS

Wednesday, September 2

- Richmond Quilt Guild, 9 a.m.

Friday, September 4

- Shabbat Service, 7:30 p.m.

Saturday, September 5

- Torah Study/Brunch, 10:30 a.m.

Sunday, September 6

- NO Religious School

Thursday, September 10

- Board Meeting, 7:30 p.m.

Friday, September 11

- Bon Air Artists Assoc., 9 a.m. - 12:30pm
- Congregational Potluck Dinner, 6:15 pm
- Shabbat Service, 7:30 p.m.
- Board Installation and Cantor Riki

Saturday, September 12

- Torah Study/Brunch, 10:30 a.m.
- Movie Night, 6:30 p.m.:
"The Librarian-Return to King Solomon's Mines"

Sunday, September 13

- Religious School, 9 a.m. - 12 p.m.
- Opening Assembly

Monday, September 14

- Personnel Committee Meeting, 7:15 pm
- Finance Committee Meeting, 7:30 p.m.

Wednesday, September 16

- BULLETIN DEADLINE FOR OCTOBER ARTICLES

Thursday, September 17

- Membership Committee Meeting, 7 p.m.

Friday, September 18

- Erev Rosh Hashanah, 7:30 p.m. at the JCC

Saturday, September 19

- Rosh Hashanah Morning, 10:30 a.m.

at the JCC

Sunday, September 20

- High Holiday Family Worship/ Workshop, 10 a.m. - 12 p.m.
- In lieu of regular schedule
- Followed by a Hot Dog Picnic, 12 p.m.

Friday, September 25

- Shabbat Service, 7:30 p.m.

Saturday, September 26

- Torah Study/Brunch, 10:30 a.m.
- Richmond Folk Music Society, 8 p.m. Davies, Brencheley, Davies

Sunday, September 27

- Religious School, 9 a.m. - 12 p.m.
- Erev Yom Kippur - Kol Nidre, 7:30 p.m. at the JCC

Monday, September 28

- Yom Kippur Morning, 10:30 a.m.
- Family Service, 2 p.m.
- Rabbi's Discussion, 3 p.m.
- Afternoon/Yizkor Service, 4:30 p.m. at the JCC
- Followed by Break-the-Fast

LOOKING AHEAD TO OCTOBER:

Friday, October 2

- Bon Air Artists Assoc., 9 am - 12:30 pm
- Shabbat Service, 7:30 p.m.

Saturday, October 3

- Torah Study/Brunch, 10:30 a.m.

Sunday, October 4

- Religious School, 9 a.m. - 12 p.m. Sukkot Program
- Torah Tots, 10:30 a.m. - 12 p.m.

Monday, October 5

- Personnel Committee Meeting, 7:15 pm

Wednesday, October 7

- Richmond Quilt Guild, 9 a.m.

Thursday, October 8

- Board Meeting, 7:30 p.m.

Friday, October 9

- Shabbat Service, 7:30 p.m.

Saturday, October 10

- Torah Study/Brunch, 10:30 a.m.

Sunday, October 11

- Religious School, 9 a.m. - 12 p.m.

Monday, October 12

- Finance Committee Meeting, 7:30 p.m.

Thursday, October 15

- Membership Committee Meeting, 7 p.m.
- BULLETIN DEADLINE FOR NOVEMBER ARTICLES

Friday, October 16

- Congregational Potluck Dinner, 6:15 pm
- Shabbat Service, 7:30 p.m.
- Adult Hebrew Naming Service

Saturday, October 17

- Torah Study/Brunch, 10:30 a.m.
- Movie Night, 6:30 p.m.

Sunday, October 18

- Religious School, 9 a.m. - 12 p.m.
- Torah Tots, 10:30 a.m. - 12 p.m.

Friday, October 23

- Shabbat Service, 7:30 p.m.
- OATY - Fall Kallah 10/23 - 10/25

Saturday, October 24

- Torah Study/Brunch, 10:30 a.m.
- Richmond Folk Music Society, 8 p.m. Joel Rubin

Sunday, October 25

- Religious School, 9 a.m. - 12 p.m.

Friday, October 30

- Shabbat Service, 7:30 p.m.



"Charity depends on the vicissitudes of whim and personal wealth; justice depends on commitment instead of circumstance. Faith-based charity provides crumbs from the table; faith-based justice offers a place at the table."

- BILL MOYERS

RABBI'S RAMBLINGS

Dear Chaverim,

We are continuing the creative venture of building our Kehillah Kedoshah — transforming Congregation Or Ami into a radically Welcoming Sacred Community. When you enter into the sanctuary at Or Ami on any Shabbat, you can feel the flow of care and concern. And we can do even better!

This Yamim HaNoraim (that's the wonderful Hebrew term for the High Holy Day, which means the Days of Awe — better isn't it?!) you will be able to sense it when you enter the Weinstein Jewish Community Center — the place we will again make Holy by our joining together in Sacred Community to celebrate our New Year. Greeters will welcome and embrace you and all who come to be a part of the Or Ami family during this wonderful time of the Jewish Year. (We don't have ushers — how does one ush anyway?) We have greeters. And every member of our community is a potential greeter.

Since I arrived here three years ago, we have grown by 50 percent as a community. We now have over 600 souls within our so very special Kehillah. Six hundred and growing every week. And don't think of units or family memberships, I want you to think about Or Ami as this expanding joyous sacred family/community of 600 individual souls. This growth is both in breadth

— more people — and depth — more spiritual gifts coming into our vibrant community. We are an ever-growing spiritual village. Each new member moving in and joining our discussions and activities adds another brick in our strengthening spiritual building. Old and new, young and not-so-young — each one a vital link in our Sacredness.

I encourage you to invite your Jewish friends to come and discover just how very wonderful Or Ami continues to become — for the holidays and the rest of the year. Every unaffiliated Jewish child in greater Richmond must be welcomed into our religious school experience and assured a place there. Every unaffiliated Jew throughout greater Richmond should be found and welcomed to add his or her spiritual gifts and voice to who we continue to become.

This is the New Year — a time to celebrate in the fullest of joy the gifts we have received and the gifts we and others have to give. That's the Jewish way!

Karen and I wish the entire Or Ami family a wonderfully sweet New Year!

L'Shanah Tovah Tikatevu,
Rabbi Ben



PRESIDENT'S MESSAGE

Alex Simon

September means back to school and for most Jews, back to God; or at the least back to Temple, synagogue, or shul — take your pick. This “getting back” or “returning” includes getting back to Or Ami. Many of our members have been busy worshiping, studying, teaching, and volunteering during the year and over the summer. For those of you who have not, please take a look elsewhere in the bulletin at the host of activities going on this month at Or Ami, and in addition to coming to Rosh Hashanah and Yom Kippur services, come to one of them. After all, in returning to Or Ami, you're coming home.

It has been wonderful to see the Caring Committee and many of our members cook meals and help out in various ways when Linda Heuser's daughter fell so ill, when the Friend/Stein family experienced a devastating house fire, and as Yvonne Goldman battles her cancer. Although there is always more that can be done, I like to focus on the time and efforts made by so many of our members, all of whom are volunteers.

Or Ami, like the Richmond Jewish community, is a mix of natives and come-heres. Some of the

non-natives have been here 40 years, some a year. Some natives went away and came back. At Or Ami it doesn't matter if you have been a member since the 1970s or '80s, or whether you just joined. Your enthusiasm and ideas are not just welcome, but necessary. Any dynamic organization needs to generate new ideas, try new approaches, and work to improve. Not every new idea is an improvement, and sometimes experiments teach us what not to do, or how not to do something — which is very valuable. The core values of Or Ami, however, remain timeless.

This is a member-driven congregation where we take ownership of all congregational activities. We are active participants in doing Judaism, not spectators. We move chairs and set up tables; we don't wait for others to do it for us. We create, and are open to participating in, liturgy across the spectrum of Jewish worship; from classical Reform to mystic, from humanistic to conservative. We do mitzvahs for our members in need, and tikkun olam within the larger community. We learn and teach Judaism from our toddlers to our retirees. Please join Rabbi Romer, David Goldsmith, our Sunday school teachers, and the rest of us at Or Ami as we put these core values into action.

Alex Simon
President

HIGH HOLIDAYS 2009 - MARK YOUR CALENDARS

ROSH HASHANAH: begins at sundown on Friday, September 18, and ends at nightfall on Sunday, September 20.

YOM KIPPUR: begins at sundown on Sunday, September 27, and ends at nightfall on Monday, September 28.

This year again, the High Holidays will be held at the Weinstein Jewish Community Center.

Friday, September 18 - at the JCC
• Erev Rosh Hashanah, 7:30 p.m.

Saturday, September 19 - at the JCC
• Rosh Hashanah Morning, 10:30 a.m.

Sunday, September 27 - at the JCC
• Religious School, 9 a.m. - 12 p.m.
• Erev Yom Kippur - Kol Nidre, 7:30 p.m.

Monday, September 28 - at the JCC
• Yom Kippur Morning, 10:30 a.m.
• Family Service, 2 p.m.
• Rabbi's Discussion, 3 p.m.
• Yizkor Service, 4:30 p.m.
Followed by Break-the-Fast



Ben Romer, **Rabbi** 381-7894

Alex Simon, **President**
266-1676

Elaine Ragone, **Cantorial Soloist Emerita** 740-8673

David Goldsmith, **Director of Education** 740-0869

Congregation Or Ami Beacon
September 2009, Issue No. 165

Published monthly by

Congregation Or Ami

9400 Huguenot Road

Richmond, Virginia 23235

Ph. 272-0017 / Fax 272-3931

Email: office@or-ami.com

Website: www.or-ami.com

• David Dorfman 285-5571

1st Vice President

• Linda Heuser 272-2887

Vice President

• Alan Freedman 768-4732

Vice President

• Michael Glass 550-7568

Treasurer

• Marsha Hanzel 320-1487

Financial Secretary

• Meredith Wilkinson 550-1559

Recording Secretary

• Ellen Hofheimer 741-7426

Historian

• Vania Farnsworth 601-3038

• Stan Feuer 379-5956

• Bruce Gould 230-4103

• John Mark Joseph 323-3238

• Judy Katzen 741-1226

• Gerald Margolis 794-7586

• Ed Levine 755-4318

• Heather Nees 608-1280

• Nancy Nelson 285-9108

• Stefanie Papps 510-590-6809

Directors at large

A NOTE FROM MR. G

Director of Education

REGISTRATION TAKING PLACE

Registration for the new school year is now taking place. A registration form is available on our website, www.or-ami.com. Please save everyone a lot of time by registering now instead of waiting for the school year to begin September 13. We need the forms returned so that we can finalize the faculty and order texts.

If you want a good Jewish education for your child(ren) but you honestly cannot afford it, please know that we never turn a child away because of inability to pay. We will put you in touch with our Financial Secretary, who will make arrangements in strictest confidence.

Do you know of a Jewish family – neighbors, co-workers, friends – who might be interested in a quality Jewish education for their kids? Have them contact Education Director David Goldsmith at 740-0869 or OrAmiSchool@aol.com.

FAMILY EVENTS IN SEPTEMBER

Mark your calendars

SUNDAY, SEPTEMBER 13 – OPENING DAY FOR GRADES K-10

- 8:30-9:15: Registration, check-in, bagel breakfast
- 9:15-9:45: Assembly for students & parents
- 9:45: Students & teachers to classrooms, parent meeting with Rabbi Ben
- 12:00: Dismissal

SUNDAY, SEPTEMBER 20 – HIGH HOLIDAY FAMILY WORKSHOP

- 10:00 a.m. – noon (in lieu of regular schedule). An edutaining (both educational and entertaining) program for the family to include a short service, a “Book of Life” project, stories, Tashlich, apples & honey, and much more. Followed by a hotdog picnic. Open to the public. See enclosed flier for more information.

MONDAY, SEPTEMBER 28 – YOM KIPPUR FAMILY SERVICE

- 2:00 p.m. at the Weinstein JCC. Prayers, stories, and games. Mr. G’s famous Jonah puppet show.



ADULT LEARNING

Or Ami is more than a place of prayer and assembly, but also a place of study or “Beit Midrash.” Already, Or Ami provides many learning opportunities, including the religious school for children, Torah Study Brunch on Saturday mornings, and the lectures, workshops, and classes that occur throughout the year. However, we would like to enhance the opportunities for adult learning at Or Ami. To do this, though, we need to know what your learning needs and interests are! Please help us assess this by completing the short questionnaire on pages 18 and 19 in this bulletin and returning it to the office. OR you can complete the same questionnaire online at <http://tinyurl.com/learning-at-orami>. Please complete one questionnaire for each adult in the family.

Also, if you’re interested in helping us plan how we will enhance adult learning at Or Ami, please contact Stefanie Papps (510-590-6809 or stefanie.papps@gmail.com) about the adult education committee. We would love to have your input and help!



TORAH READINGS FOR SEPTEMBER

Sept. 4/5: Torah: Ki Tavo, Deuteronomy (Devarim)

26:1-29:8

Haftarah: Isaiah (Yeshayahu) 60:1-22

Moses tells the people that when they enter the Land of Israel — remember to give thanks for all that happened, for all who came before you that allowed you to be entering the Land of Promise. How often do we pause and remember those upon whose shoulders we stand? That we cannot be who we are continually becoming is in great part due to not just the gene codes we inherit, but the cultural traditions passed on. You receive intelligence through inheritance and extelligence through all you have learned within family, culture, and Judaism.

Sept. 11/12: Torah: Nitzavim, Deuteronomy (Devarim)

29:9-30:20

Haftarah: Isaiah (Yeshayahu) 61:10-63:9

How hard do you think it is to understand Torah — to connect

to and live your Jewishness? Some of us think that since we aren't adept with commentaries, or we aren't Orthodox, or we didn't grow up learning much about Judaism, or we haven't done much lately, or...or...or....

Our reading tells us anyone can do this. Or better — each of us has the spiritual power to find how to do this from within our self. It's not too distant. All you have to do is want to learn and experience it!

Sept. 18/19: Torah: Genesis (Beresheet) 22:1-19

Haftarah: 1 Samuel (Shmuel Alef) 1:1-28

What is our commitment to the next generation? Both of our readings relate the birth of children and the trials and tribulations of raising and caring for them. The Akedat Yitzchak (the Binding (not the sacrifice) of Isaac) is one of the most dramatic parental challenges in the TaNaKh. Does Abraham pass? Who is really on trial, who is tested more — God or Abraham? I think Abraham

knows what he is doing and pushes God to the limit to see if this God really means to be an ethical and moral creator.

Sept. 25/26: Torah: Ha'azinu, Deuteronomy (Devarim)

32:1-52

Haftarah: Micah (Michah) 7:18-20;

Joel 2:15-27

Moses calls heaven and earth as witnesses as he winds up his long series of discourses, which encompass most of the book of Deuteronomy. We are a Kehillah Kedoshah — a Sacred Community — because we are covenanted with the One Who makes Holiness possible. So, it is appropriate that heaven, earth, and humanity — we who are made in the image and likeness of God and the Beloved, God, the One, the Source, Tzur Yisrael — choose a term that works for you — combine at this moment of critical covenanting as our ancestors step out into the Promised Land.

ALL IN THE FAMILY

RABBI ROMER IN THE COMMUNITY:

- Rabbi Romer attended the RISC Board Meeting.
- Thanks to David Goldsmith for his par-rabbinic presence during Rabbi Romer's vacation. David led two creative and meaningful Shabbat worship experiences.
- Thanks to Laura Petrella and Lisa Wilburn for putting on the wonderful Shabbat Summer Salad Social. More than 50 members and prospective Or Ami members shared a wonderful time.
- Refuah Sheleimah — speedy recovery to: Yvonne Goldman, Helene Grossman, Herold Hofheimer, Sam Katzen, Gerry Vance Owen, and Barnette Silbert.

MAZEL TOV!!! To all our recent high school and college graduates. We are so happy to wish all of them luck and success.

ROBYN ATWELL, daughter of Steve and Sherri Deutsch Atwell, graduated from James Madison University with a degree in Health Sciences, with plans to attend dental school in the future. She is just returning from Costa Rica, where she was teaching, and will leave to live and work in Honolulu for the next two years.

EMILY COHEN, daughter of Dr. Fred and Judy Cohen, graduated from Macalester College in St. Paul, Minn. with a degree in International Policy. She plans on working this year for Teach America. She also recently returned from studying in China.

MEAGHAN GOULD, daughter of Steve and Renee Gould, graduated from James Madison University with a degree in Health Sciences. She plans to apply to medical school for 2010. Meaghan was married in June to Brendan Karanasios and they are currently residing in Harrisonburg where Brendan works for Serco, a company that contracts with the patent office. Brendan reviews bio-chemistry and bio-medical patent applications. Brendan is planning on attending pharmacy school in 2010.

CAITLIN GOULD, daughter of Renee and Steve Gould, graduated from the University of Massachusetts with a Master's degree in Public Policy and Administration with a

specialization in Energy and Environmental Policy. She recently accepted a position with the Pew Charitable Trusts in Washington, D.C., in the Pew Environment Group.

MAEVE GOULD, daughter of Bruce Gould and Kathleen McClory, graduated from Virginia Tech with a degree in Urban Planning. She will be starting a one-year AmeriCorps internship with the High Country Conservancy in Boone, N.C.

MARK LEVINE, son of Scott and Barbara Levine, graduated from Carnegie Mellon with a Bachelor of Science in Computer Science and Economics, with a minor in computerized finance. He is currently working for Oracle in San Francisco.

RACHEL LORIA, daughter of Dr. Roger and Win Loria, graduated from Christopher Newport University with a degree in Psychology. She will be attending VCU in September, beginning work on a master's degree in Special Education and Disability Policy. Rachel recently was awarded a full scholarship from the Preparing Change Project — a grant awarded by VCU for studying early childhood education. While at Christopher Newport, Rachel carried on an Or Ami tradition: having the CNU Hillel House create Welcome Kits for Foster Children. Last year, they made 60 foster care kits that were donated to the local Department of Social Services — way to go, Rachel!

DEANNA MARKOWITZ, daughter of Dr. David and Dr. Monika Markowitz, graduated from the University of Virginia with degrees in History and Political Science. Deanna is living in Arlington, Va. and is doing a two-year internship as a paralegal for a law firm that specializes in representing non-profit organizations. Deanna plans to attend law school in the future.

ERIK MARKOWITZ, Deanna's brother, is entering his second year at Longwood, majoring in elementary education.

DAVID PEYTON, son of Jeffrey and Rita Peyton, is transferring to VCU to continue studying for a business degree.

STEPHEN ATWELL, son of Steve and Sherri Atwell, is working for the World Teach Program in American Samoa. He will be there for at least one year.

EVAN MEIXNER, son of Beth Meixner, has been living and teaching in France for several years. In September, he will begin

studying for his master's degree in Sociology at the Sorbonne.

ALEX STOLBERG, son of Martha Schulman and Arnold Stolberg, graduated from Virginia Tech with a degree in Nutrition/Dietetics and for the next year will be working for Virginia Tech in the Food and Nutrition Lab.

DAVID FERRISS, son of William and Adrienne Ferriss, graduated from James River High School and will be attending Mary Washington University.

DEVON KINSLEY, daughter of Craig and Nancy Kinsley, graduated from Godwin High School and plans to attend Randolph Macon, majoring in Pre-Med/Biology.

ASHBY MONCURE, daughter of Ellen Moncure, graduated from J.R. Tucker High School in the language immersion program and will be attending Christopher Newport University.

SARA NIEMEYER, daughter of David and Arielle Niemeyer, graduated from Trinity Episcopal High School and will be attending Virginia Tech. Her mother, Arielle, is beginning work on a doctorate at VCU.

JOEY PEYTON, son of Jeffrey and Rita Peyton, graduated from the Home School and will be attending J. Sargeant Reynolds Community College to work on a degree in Business.

ANDREW SHAMASKIN, son of Dr. Ron and Elaine Shamaskin, graduated from the Math and Science Center at Clover Hill HS. He will be attending Virginia Tech, majoring in marine biology.

JACOB SHANK, son of Elizabeth Shank, graduated from Appomattox Regional Governor's School. He will be attending VCU to work on a business degree.

Did you see the article in the Sunday, August 9th Richmond Times-Dispatch on "Memories of Woodstock"? It featured our own Bob Tarren, who attended Woodstock when he was 16 years old. He still has his tickets from the event and a t-shirt!

Be sure to let us know when something special happens in your family, so that we can pass the word along to the rest of the Congregation.

CONTRIBUTIONS

Contributions to a fund of the Congregation may be made in honor or in memory of a family member or a friend to any of the congregational funds, such as the Dorothy & Bernard Packer Educational Endowment Fund, Building Fund, Congregational Discretionary Fund, Flower Fund, General Fund, Harvey Lampert Memorial Garden Fund, The Scholarship Fund (in memory of David & Clara Sack, Margarete Hirsch, and Susanne Hirt), Sustenance/Social Action Fund, or another fund mentioned elsewhere.

Caring Fund

- Beth Meixner
- Frances S. Seiden

Fundraising

- In appreciation for bringing many people to our restaurant - *Ruangtong Inc. (Thai MaMa)*

General Fund

- Francine B. Colletti - *Jonathan Lebolt & Robin Gorsline*
- In honor of the marriage of Jason Seiden and Krista Robinson - *David Dorfman & Donna Becker*
- Get well wishes to Carolyn Powell, Yvonne Goldman, Cagan Friend, and David Fine - *Renee Gould*
- With sympathy to Meg Clark on the death of her father, Charles Schwartz - *Renee Gould*
- In honor of the marriage of Jason Seiden and Krista Robinson - *Renee Gould*

Music Fund

- Thank you to the Klezm'Or'Ami'm for performing at Forest Hill Park on July 19, 2009 - *Friends of Forest Hill Park*

Rabbi's Discretionary Fund

- In appreciation of the rabbi's assistance with Jacob's Bar Mitzvah - *Evan & Michele Nelson*

Religious School Fund

- In memory of Jonathon Manheim, brother of Seth Manheim - *Richard & Whitney Jaffe*

Social Action Fund

- For our Refugee Family - *David & Sylvia Fine*
- In memory of Sally Revenson - *David & Sylvia Fine*
- In honor of our granddaughter, Kendall Wilkinson's birthday - *David & Sylvia Fine*

Torah Fund

- In honor of the wedding of Jason Seiden and Krista Robinson - *Frances S. Seiden*

LOST & FOUND

The following is a list of items that are in the "Lost & Found" at Or Ami. If any of these items are yours, please claim them as soon as possible. Any items not claimed will be donated to Goodwill.

- 1 girl's white sweat jacket
- 1 red sweat jacket
- 1 little girl's hot pink fleece jacket
- 1 small child's denim jacket
- 1 adult Eddie Bauer black jacket
- 1 red tartan plaid Kangol hat
- 1 plaid scarf
- 2 walking canes (1 silver, 1 bronze)
- 1 black compact umbrella
- 1 large black umbrella



RECIPE REMINDER! - Heather Nees

Don't forget — I am still collecting recipes for Or Ami's upcoming Cook Book! Send me some of your favorite holiday/family recipes! It's easy, just send it to me in an email (heather510@sprynet.com) or drop it off in the temple office with COOK BOOK marked on it. I can't wait to share all of the delicious results with you!

We are looking for interested volunteers to work on the *Aesthetics/Building & Grounds Committee.*

Please contact Renee Gould or Maxine Margolis if you are interested in helping on this committee.

Yahrzeits* (MEMORIAL ANNIVERSARY)

These names will be read on the following dates:

Sept. 2	Lucy Chiarello	9/4/09	Sept. 15	Robert Heller	9/18/09
Sept. 2	Saul Jaffe	9/4/09	Sept. 16	James V. Chiarello	9/18/09
Sept. 2	Ann Fayer Feinmel	9/4/09	Sept. 17	Susanne Hirt	9/18/09
Sept. 3	Sydney Schwartz	9/4/09	Sept. 18	David Avigdor Leibovic	9/18/09
Sept. 6	Max Kramer	9/11/09	Sept. 21	Esther Grainer	9/25/09
Sept. 6	Sol Farbman	9/11/09	Sept. 22	Paul Scott Owen	9/25/09
Sept. 7	Khana Tulchinsky	9/11/09	Sept. 25	Ruth Ferriss	9/25/09
Sept. 8	Harvey Lampert	9/11/09	Sept. 26	Chava Mlotek	10/2/09
Sept. 8	Shirley Silver	9/11/09	Sept. 26	Nancy R. Olsen	10/2/09
Sept. 8	Katherine Elizabeth Nelson	9/11/09	Sept. 26	Samuel Ringel	10/2/09
Sept. 9	Earle Yaile Gross	9/11/09	Sept. 27	Samuel Rubin	10/2/09
Sept. 10	Hanna Lewin Schiffman	9/11/09	Sept. 27	Benjamin Gross	10/2/09
Sept. 11	Walter D. Nelson, Sr.	9/11/09	Sept. 28	Arthur Levine	10/2/09
Sept. 13	Sam Silver	9/18/09	Sept. 29	Frank Walter Sheffler	10/2/09
Sept. 13	Leah Lewis Cohen	9/18/09	Sept. 30	Mamie S. Haykin	10/2/09
Sept. 14	Seymour Simon	9/18/09			

Contributions to Or Ami memorializing a loved one may be sent to the Or Ami office. You may specify a fund to which the contribution should go, such as the Andrew Lendvay Teacher and Music Education Fund, Continuing Education Fund (Adult Education), High Holy Day Fund, Landscaping Fund, Library Fund, Music Fund, Oneg Shabbat Fund, Refurbishment Fund, Religious School Fund, Torah Fund, or another fund mentioned elsewhere.

***Yahrzeit: Remembering on the Anniversary of a Death**

The yahrzeit is a time of remembering the dead by reciting the Kaddish, lighting a 24-hour candle, and remembering the person who has died.

SAYING KADDISH

The last column of the above Yahrzeit page lists the Shabbat service when your loved one's name will be read at the conclusion of the service. Please call Maria at the Temple (272-0017) if you wish to add to the list.

Please call the Temple office if you would like to change the date a name will be read.



OR AMI CARES

Please let the Temple office or Rabbi know if a family member is in the hospital or if other situations arise when the congregation may be of assistance or comfort. Changes in hospital privacy rules prohibit officials from contacting the Temple, so we aren't always aware of situations unless family or friends notify us.

CONGREGATION OR AMI'S MISSION STATEMENT

Congregation Or Ami, "Light of My People," is a dynamic, sacred community — Kehillah Kedoshah — welcoming people of all ages and backgrounds who seek spiritual fulfillment and involvement grounded in principles of the Reform Jewish Movement.

We affirm fresh pathways and approaches to our core values:

- **TORAH:** Jewish study, education, knowledge, and values.
- **AVODAH:** Jewish prayer, worship, creative liturgy, and prayer based on Jewish thought.



- **GEMILUT CHASIDIM:** deeds of loving kindness, actively embracing our sacred responsibilities to each other, our community, our nation, and our world.

Thus, individually and as a congregation, we interpret the tenets of social action and ethical imperatives in our lives through our relationship with Torah, prayer, and tikkun olam (making our world whole.)

SOCIAL ACTION HAPPENINGS - Marilyn Breslow



With the New Year comes the opportunity for resolutions. We hope yours will entail Tikkun Olam, the Jewish mandate to heal the world. This may mean getting out to serve the poor, either through direct service or education and advocacy, environmental conservation, and/or contributing financially to help those less fortunate. Or Ami's social action committee stands by to help members find a niche that fits.

If you are interested in joining the social action committee, please call Marilyn Breslow at 272-0939.

Please consider how you can get involved. Here are some options:

- Mentor/tutor children once a week at Redd Elementary School.
- Volunteer with a refugee family forced from their homeland.
- Help build a house for a family through Bon Air Friends of Habitat.
- Once a month, make a contribution to feed 15 men at a homeless shelter.
- Look at issues afflicting Richmond with RISC partners and mobilize members for change.
- Help write issue articles for the bulletin, and arrange special Shabbat services.
- Get before our law makers and let them know citizens protest policies that contradict our religious social teachings.

Believing that a Jewish voice for universal, affordable, accessible health care must be heard, the Religious Action Center for Reform Judaism established JewsForHealthCareReform.org. Our faith tradition teaches us to care for justice, and today's system that leaves millions of Americans uninsured and millions more underinsured is not just. Torah teaches that an individual human life is of infinite value and its preservation supersedes almost all other considerations. It's that simple, and that crucial. Check it out and write your senators and representative.

We look forward to beginning construction of a house in partnership with Bon Air Friends of Habitat and Powhatan Habitat for Humanity in October. Stay tuned for more information on the family and plans in the weeks to come.



In this recession, many are struggling. We look forward to a year of community investment in making things a bit easier for those most at risk, and a renewed sense of purpose for all of us. Please join in the effort. Sign up sheets will be at the JCC. If you have questions or miss the opportunity to add your name to a list there, please call Marilyn Breslow at 272-0939.

More than 350 Welcome Kits for Foster Children were put together on Mitzvah Day and in the months that followed. All the kits were donated to the Department of Social Services for the City of Richmond. Many thanks to Jay Nathanson, Renee Gould, Liz Shank, and all those who worked to see this project through to completion. We did not receive sufficient contributions to fill bags for each age group, so money had to be spent. Please consider a check to support social action. It allows us to give a little comfort to those who are among the most vulnerable in our community in a time of crisis. Please know that all donations are spent conservatively and to directly benefit those in need.



OR AMI YOUTH GROUP INFORMATION (OATY)

Nancy Nelson

Although it is summer, OATY is still busy spending time together. Of course, most of the time we spend together is in smaller groups, such as our planning committees for Fall Kallah. But, when the need arose recently for a former OATYite's family, we rose to the occasion. In a short amount of time, the teens organized and planned to take Shabbat dinner to the Friend/Stein family. Michael was home when we delivered it, so we had a chance to spend some time with him, and before we left we got to see his parents as well. Afterwards we went for a delicious (but SLOW) Italian Shabbat dinner, and finished the evening off by joining Or Ami for Shabbat services. When the teens were concerned about being late to services, I reminded them of all the wonderful things they had done and that they had nothing to be ashamed of!

On Sunday, August 16, OATY held elections for the coming year. Although these are a little later than normal, we wanted to wait until after our leadership retreat. With the beautiful backdrop of Maymont Park, and the aid of Kerri Murphy, the elections went very well! Our new board is as follows:

- **President:** Shirley Aurand
- **Programming Vice President:** Johnnie Armes
- **Social Action Vice President:** Ethan Wilburn
- **Membership & Communications Vice President:** Jesse McWilliams
- **Richmond Relations Coordinator:** Sasha Kogan
- **Historian/Photographer:** Scott Grossman

For a glimpse into the coming year, be sure to read Shirley's article. As she says much more eloquently than I do, this is going to be an amazing year! We have so many things to look forward to and work towards, and there is such a great momentum with these teens. Nothing will stop them from achieving greatness!



Pictures: Trip to Maymont Park

NFTY-MAR FALL KALLAH

Beth Ahabah's youth group, JeRAFTY, and Or Ami's youth group, OATY, are hosting a regional event for youth groups throughout the Mid-Atlantic Region. At least 200 8-12th graders will be coming into Richmond from October 23rd-25th, the weekend before Halloween.

***WE ARE GOING TO NEED YOU TO BE
A PIECE OF THE PUZZLE.***



HOUSING

Since so many young people are coming, we need your help in housing two to four (or more!) teenagers for the weekend. Housing these teens requires a few commitments on your part. The teens will need transportation (you must have a seat belt for each teen that you are housing), Saturday morning breakfast and dinner, and a place to sleep (beds are not needed - they bring sleeping bags) for Friday and Saturday nights. If you are able to help, we ask that you fill out a quick online survey at <http://tinyurl.com/housing-form>.

If you have any questions, please email Leslie Garber (Leslie.Garber@dom.com) or Lisa Wilburn (lisawilburn@yahoo.com).

ART SUPPLIES

We are conducting programming throughout the weekend, and in order to do that, we will need art supplies. We are hoping to receive glue sticks, old magazines, scrap booking paper, modge podge, stickers, scissors, posterboard, markers, and any other art supplies that you are able to donate.

If you are willing to donate anything, please contact Ramona Brand at Ramona@bethahabah.org.

FOOD

We are also looking for individually wrapped snack donations, so that our NFTY-MARites have something to nosh on when they arrive on Friday afternoon. That same evening, we are looking for willing congregants to help serve food that will be catered by Noodles & Co. On Saturday evening there will be a social, so we are looking for congregants who would like to provide snacks (potato chips, pretzels, etc.) and drinks for that evening. We also

need a few volunteers to help serve the snacks Saturday night. We would really appreciate your help and time — thank you for reading over this!

If you are interested in helping with food, please contact Peggy McElgunn at peggymcelgunn@comcast.net.

PUZZLES

We are also looking for puzzles of the world. If you are willing to donate a puzzle, please contact Leah Garber at leahmous@gmail.com.

If you have any general questions about the event, please feel free to contact Nancy Nelson (nancy.nelson5@comcast.net) or Matt Gaskin (mattegaskin@gmail.com).

We thank you again for your interest in helping and look forward to any help you give. Any way you can help is appreciated! We're looking to make this a fantastic weekend for these young people and to allow them to walk away with an impression of what makes Richmond Richmond.



OATY PRESIDENT'S MESSAGE

Shirley Aurand

I'm excited for this year for OATY. The group has been growing closer together ever since that event and Fall Kallah. The prospects and future for OATY is a bright one and something I am proud to be part of. I don't know if people can see the difference, but there is a closeness that is ever-growing compared to last year. There is so much potential in each of the members that I believe we're capable of a lot of things. This year is going to be a remarkable one for us. My main goal is just to continue that, and to define the group roles so that next year it can be expanded upon. I want to see the unity continue in the times to come. I want to see it stay together and make this a year to remember for OATY. We've done so much with Fall Kallah that this year is already off to a start without positions even in place.



I just want to say... each member of OATY has something to contribute and that is what going to make OATY a success. It is the individuals coming together that is making OATY what it is today. I want to see that continue. My goal is to set a foundation, an environment that can continue over next year. We've got a great beginning, and I have confidence it will continue, because every member is capable of great things. This is one of the best communities I've been part of and I have no little doubt that it'll go far due to that.

OATY is ready for this year, the question is — are you ready for OATY? Because we're going to rock your socks off.

Many thanks to
Bobby Silver and
Cavalier Construction
&
Remodeling Co., Inc.
804-342-1000
for all the repair work
they do at Or Ami.

Food Bank



PLEASE DONATE!

*Please continue to remember those with insufficient income faced with high food costs, and bring **non-perishables** to the synagogue for the Food Bank.*

LITURGY COMMITTEE - Renee Gould

MEMORIAL LIST BOOK for YIZKOR

(Memorial Service)

The Liturgy Committee is interested in producing a Memorial List Book for Yizkor. We will still read names during the service. However, we would like to shorten the list to those names that we are able to identify. Please be sure to check the list when you come by Or Ami — or call Maria in the Temple Office — to let us know the names you wish read and the relationship they are to you. We will put all this information in our database.



COMMUNITY NEWS

BOXTOPS AND RECYCLING

Please continue to bring in your BoxTops. Our goal is to reach \$500 this year for the Religious School. We can do it! The school also receives money for recycling cell phones and inkjet cartridges. Please bring them to the office with your BoxTops. Thank You!



REGISTRATION FOR THE 2009-2010 FLORENCE MELTON ADULT MINI SCHOOL IS NOW OPEN!

Classes will be offered on Tuesday evenings at 7:15 p.m. beginning October 5th at the Weinstein JCC.

Melton is designed to provide an intellectually stimulating, pluralistic learning environment using classic Jewish sources, from Biblical through contemporary texts, and to investigate issues of Jewish thought, practice, and ethics. It includes four courses

taken over two years. The cost per year is \$475, or just \$825 for couples, and is sponsored by the Weinstein JCC.

Space is limited, so anyone who is interested, or for further information about the Melton Mini-School, please contact: KB Levin at 545-8657 or klevin@weinsteinjcc.org.

FRIENDLY WELCOMERS NEEDED ON AN OCCASIONAL SHABBAT!

If you agree that Or Ami is a "welcoming" congregation, or if you want that term to describe our community, a few minutes of your time is needed on an occasional Friday night. We need members to volunteer to be one of two Shabbat "meeter/greeters." As a "meeter/greeter" you welcome all who come to worship on the Friday night(s) of your choosing. With the possibility that you could be the first member some of our guests encounter, 30-40 minutes of your time could make the difference between Or Ami being a welcoming congregation – or not!



To do this easy activity:

- Email or call Judy Katzen (jskatzen@usa.net;

741-1226) to arrange to volunteer for one or more specific dates. You will receive a reminder email a few days prior to each chosen date.

- On Friday night, arrive about 15-20 minutes prior to the start of the service and remain at the door leading into the sanctuary for approximately 15-20 minutes after worship starts (for a total of about 30-40 minutes).
- Along with one other meeter/greeter, welcome and give a copy of the liturgy and a program to everyone.
- Introduce yourselves to anyone you do not know.
- Of those you don't know to be members already (whether you know them or not):
- Engage them in conversation.
- Ask if they are new to services at Or Ami.
- If they are by themselves, suggest seating near another member with common interests (e.g. college age with young adults).
- In other words, make Shabbat worshippers feel welcome!

We need you for dates for this and the coming months. Please email or call ASAP to be part of Or Ami's welcoming community.

Gift Shop

We have a beautiful selection of gifts for Shabbat, Bar/Bat Mitzvahs, weddings, births, Hanukkah, etc.

Mezuzahs, candlesticks, Kiddush cups, and jewelry are just some of the items we carry. Items not found in our Gift Shop can be ordered. Please contact Renee Gould to view the catalogs.

SEPTEMBER FOLK MUSIC CONCERT

Davies-Brenchley-Davies - English, Celtic, Appalachian, and More...

On **Saturday, September 26, 2009**, the Richmond Folk Music Society will kick off their 2009-10 concert season with an evening of English, Celtic, and Appalachian music from the trio of **Davies, Brenchley, and Davies**. **Doors open at 7:15, and the concert will begin at 8:00.**

Gwilym and Carol Davies are a husband and wife team residing in Gloucestershire, England, who have been deeply involved in folk music for many years. Gwilym is known as a serious collector, especially for his work in collecting and documenting the songs of the English Traveller (gypsy) community. He has spent time in Appalachia and in the Adirondacks of the United States, interviewing and recording source singers and comparing ballad versions from both sides of the Atlantic. He plays banjo, concertina, and melodeon. Carol brings her vocal and keyboarding skills to the mix, and Terry Brenchley (who now resides in Brittany) is a supremely talented and versatile fiddler. He has made a special study of Breton and other French folk tunes.

The trio have been playing together in various groups over many years, and bring to their music an impressive background of research into traditional music and song. Although they are serious scholars, they don't take themselves too seriously! They present a rare combination of impeccable musical knowledge and research with a sense of pure fun and enjoyment!

Visit their Myspace Page at <http://www.myspace.com/daviesbrenchleydavies>



2009 – 2010 CONCERT SCHEDULE

- **September 26, 2009**
Davies, Brenchley, and Davies
English, Celtic, Appalachian and More
- **October 24, 2009**
Joel Rubin
Pure Klezmer
- **November 14, 2009**
Celtic Aire Heritage Ensemble - FREE
Celebrating America's Celtic Roots
- **December 26, 2009**
John Turner and Cliff Williams
Traditional Scottish Fiddle and Song
- **January 30, 2010**
Mark Campbell and the Campbell Family Band
Old Time Dance Music
- **February 20, 2010**
Alex Caton
Sizzling Old Time Fiddle and Song
- **March 27, 2010**
Jeni and Billy
Songs of Coal, Hard Living, and Salvation
- **April 24, 2010**
Brian Peters
Exploring the Ballad Tradition of the British Isles
- **May 22, 2010**
O'Flaherty, Dailey, and Costa
Ireland Meets Appalachia

.....

Be sure to mark your calendars now for **October 24** when internationally acclaimed clarinetist Joel Rubin and tsimbl (Eastern European hammered dulcimer) revivalist Pete Rushefsky will present a program based in large part on Rubin's latest album, **"Midnight Prayer."** The duo brings together two diverse, yet partially overlapping repertoires: the instrumental music of the **klezmerim** — the professional Jewish instrumentalists who graced every traditional Jewish wedding in Eastern Europe from at least the 16th century onwards — and the mystical **nigunim** (religious melodies of spiritual elevation) of the hasidic movement, which at the height of its popularity claimed more than half of Eastern European Jewry among its followers.

.....

For more information about Richmond Folk Music, and to purchase \$12 advance tickets, visit www.richmondfolkmusic.com (email richmondfolkmusic@yahoo.com) or telephone 804-647-7856. Tickets at the door are \$15.00.

OTHER OR AMI AND COMMUNITY ANNOUNCEMENTS

EXCLUSIVE TO OR AMIANS... RENT-A YENTA

Or Ami yentas now offering full service Bar/Bat Mitzvah party and event services. Sit back and relax as we craft exquisite, handmade decorations, arrange artful presentations, and make sure that your SIMCHA is SPECTACULAR.

Now booking for the Fall. Call Dell at 741-0489

2009 ENTERTAINMENT BOOKS

The 2009 Entertainment Books are here!

Or Ami still has a few 2009 Entertainment Books for \$25. For more information and to purchase an Entertainment Book, please call the Temple office at 272-0017.

Buy a 2009 Entertainment Book and support Or Ami at the same time!



A MESSAGE FROM YOUR FINANCIAL SECRETARY

PLEASE COMPLETE YOUR PAYMENT OBLIGATIONS FOR 2008-2009

Please return your 2009-2010 pledges and begin paying your dues for the new fiscal year that began in July 2009.

If you have questions or concerns, please call Financial Secretary Marsha Hanzel at 320-1487.

If you have questions about your pledge or payment, please call Financial Secretary Marsha Hanzel at 320-1487 or Maria in the Temple office at 272-0017. Also call if you did not receive a new pledge form, and one will be mailed to you.

BULLETIN DEADLINES

*In order to ensure that you receive your Or Ami Beacon on time, we have established monthly deadlines for submission of information to be included in the bulletin. These deadlines will be published in the Bulletin several months in advance and are final — no information will be accepted after the deadline date. **The deadline for the October Bulletin will be the morning of Wednesday, September 16th. For the November Bulletin, the deadline will be the morning of Thursday, October 15th.** Your articles can be faxed (272-3931) or emailed (office@or-ami.com) to the office 24 hours a day, seven days a week. Your cooperation is appreciated.*

Membership Lists

Membership lists (August 2009) are available on the wall racks outside the Sanctuary. If you are unable to come to the Temple to pick one up, call Maria in the office and she will mail one to you.

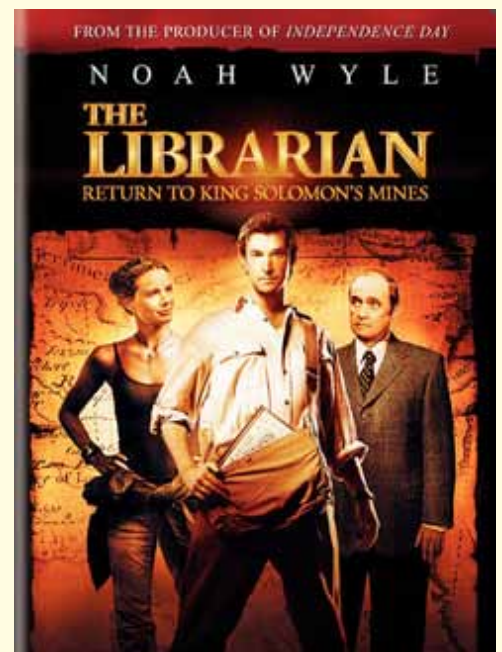
MOVIE NIGHT AT OR AMI Saturday, September 12, 6:30 p.m.

"THE LIBRARIAN - RETURN TO KING SOLOMON'S MINES"

Noah Wyle returns in the 2nd action-packed installment of this fun adventure series.

Can the Librarian survive and save the world AGAIN?

**FREE ADMISSION AND
REFRESHMENTS
LARGE WIDESCREEN FORMAT**



ADULT HEBREW NAMING SERVICE

The Adult Hebrew Naming Service has been planned for **Friday, October 16th, at 7:30 p.m.** This is a service at which adults who were never given a Hebrew name can adopt one. If you have always wanted a Hebrew name, now is your chance. At this service, adults who are called by their newly chosen Hebrew names come to the Bimah to make Aliyah. We will find an appropriate certificate that can have this new name on it as well.

If you are interested in participating in this special service, please email me (or call) and let me know, so that I can start making a list. I will run this request for a couple of months to make sure that everyone who may be interested sees it and responds.

P.S. — I found my Hebrew name on Jewish baby-naming websites. It corresponds to the meaning of the Yiddish name that I was given. You could choose one for its meaning, or just because you like it, or because it represents an ancestor. Happy searching!



Sheila Schnitt
schnitt_s@verizon.net or 353-2269

JEWISH FAMILY THEATRE AT THE WJCC

The Jewish Family Theatre at the Weinstein JCC would like to announce auditions for the first production of their upcoming 2009/2010 season, *Fiddler On The Roof*. These auditions will be on Wednesday, September 16th from 6-9 p.m. at the Weinstein JCC. Please come prepared

to sing 1-2 minutes of a song, with piano or cd accompaniment. A piano accompanist will be provided. Production dates are 12/10-12/20, with no Friday evening performances. For more information, please email Deb Clinton at dclinton@sparconline.org.

Tree of Life

The "Tree of Life" continues to grow new leaves. Recent additions include leaves to honor a past president, celebrate the birth of a child, to celebrate a Bat Mitzvah, and to remember a friend who has passed away. You can "grow" a leaf by making a \$200 donation to the Temple.



Forms are available on the next page of this bulletin, on the table in the Temple lobby, or call Maria in the office and she will mail one to you. You may also call Bruce Gould at 282-7521 for more information.

Tree of Life DONATION FORM

Use this form to make a donation to Congregation Or Ami's building fund through participation in the "Tree of Life." Leaves may be used to mark a life cycle event, to remember a family member or friend, or to honor an individual's accomplishments. A good way to remember someone special who has passed away, is to note a significant accomplishment or their dedication to family, friends, an organization, or career. Each leaf may include up to four lines, however, three

lines are recommended for the best spacing between lines. The top and bottom lines may have about 19 letters and spaces, and the middle lines may have about 23 letters and spaces. These numbers may vary depending on the lettering used. (For example, a "W" takes up more space and an "I.") The leaf is approximately 3¼ inches long by 1½ inches wide, and is a "brushed gold" color. Below are four examples:

IN HONOR OF
RUTH GOLDSTEIN'S
COMMITMENT TO OR AMI

BAR MITZVAH OF
MICHAEL SMITH
APRIL 15, 1996

IN HONOR OF
DR. DAVID M. COHEN'S
25 YEARS OF SERVICE
TO MEDICINE

25TH WEDDING
ANNIVERSARY OF
HARRY AND BETTY LEVY
JULY 12, 1993



Please fill in the information below:

Line 1: _____

Line 2: _____

Line 3: _____

Line 4: _____

Your Name:

Address:

Telephone: Email:

Donation per leaf is \$200. Three leaves may be requested for a donation of \$500.

Send completed forms and payment to:
Congregation Or Ami
9400 Huguenot Road
Richmond, Virginia 23235

Congregation Or Ami's Board of Directors reserves the right to edit requests, upon consultation with the donor.

ADULT LEARNING AT CONGREGATION OR AMI - Page 1 of 2

We are trying to create more opportunities for adult learning at Or Ami. Please respond to the following questions to help us better understand your needs and interests. You can also fill this form out online at

<http://tinyurl.com/learning-at-orami>.

Thank you!

Name:

Phone number:

Email address:

1. Below you will find a list of potential adult learning programs.

Please circle any in which you would be interested in participating.

- Classes
- Sunday Morning Workshops (Occasional classes on various topics that would take place during Religious School on Sunday mornings)
- Lunch and Learn with the Rabbi (Informal discussion of various topics over your own brown bag lunch)
- Reel Theology Movie Nights (Screening of a recent popular movie, followed by discussion of Jewish themes)
- Chavurah Groups (Small groups, based on similar interests or geographic proximity, that gather in members' homes or other chosen places to form community and explore Jewish topics of interest)
- Interest-Based Study Groups (Member-led group that gathers to study specific topics or texts)

2. Below you will find a list of potential classes that could be offered.

Please circle any in which you would be interested in participating.

- Taste of Judaism (Explores fundamental ideas and themes of Judaism, such as community and ethics)
- Adult Hebrew
- Jewish Genealogy
- The Way into Jewish Prayer
- Jewish Ideas of God
- The Way into Jewish Mysticism
- The Jewish Way in Death and Mourning
- Adult B'nei Mitzvah
- Jewish Cooking
- Challah Making
- Yiddish

Turn over

ADULT LEARNING AT CONGREGATION OR AMI - Page 2 of 2

3. If you are interested in classes, do you prefer one-time or ongoing classes?

Please circle all that apply.

- One-time class
- Short series of classes (3 - 5 weeks)
- Medium series of classes (6 - 9 weeks)
- Long series of classes (10+ weeks)

4. If you are interested in study groups, what topics would you be interested in pursuing with a group?

Please describe.

.....

.....

5. Are there any adult education programs or classes in which you would be interested in participating that were not listed above? Please provide a short description.

.....

.....

6. Do you have expertise or interest in an area (whether it is listed above or not) in which you would be willing to teach or lead an adult education program? Please describe.

.....

.....

Availability

When would you be available to participate in adult learning programs? Please check all that apply.

	Morning	Lunchtime	Afternoon	Evening
Sunday				
Monday				
Tuesday				
Wednesday				
Thursday				
Friday				
Saturday				

CONTRIBUTION FORM TO CONGREGATION OR AMI - Page 1 of 2

I/We wish to make the enclosed contribution to Congregation Or Ami in the amount of \$ _____

TEMPLE FUNDS

- | | |
|--|--|
| <input type="checkbox"/> General Fund | <input type="checkbox"/> Congregational Discretionary Fund |
| <input type="checkbox"/> Landscaping Fund | <input type="checkbox"/> Refurbishment Fund |
| <input type="checkbox"/> Andrew Lendvay Teacher and Music Education Fund | <input type="checkbox"/> Continuing Education Fund (Adult Education) |
| <input type="checkbox"/> Library Fund | <input type="checkbox"/> Religious School Fund |
| <input type="checkbox"/> Babysitting Fund | <input type="checkbox"/> Flower Fund |
| <input type="checkbox"/> Music Fund | <input type="checkbox"/> The Scholarship Fund |
| <input type="checkbox"/> Dorothy & Bernard Packer Educational Endowment Fund | <input type="checkbox"/> Harvey Lampert Memorial Garden Fund |
| <input type="checkbox"/> Oneg Shabbat Fund | <input type="checkbox"/> Sustenance/Social Action Fund |
| <input type="checkbox"/> Building Fund | <input type="checkbox"/> High Holy Day Fund |
| <input type="checkbox"/> Rabbi's Discretionary Fund | <input type="checkbox"/> Torah Fund |

The Contribution is to be:

- In honor of: In memory of: In appreciation of:

.....
.....

From:

Address:

Please list the names and address of those you wish to notify:

1. Name:

Address:

2. Name:

Address:

Do you wish this contribution to be mentioned in our Temple Bulletin? Yes No

Please mail to the Or Ami Office - 9400 Huguenot Road - Richmond, Virginia 23235

Please see the reverse side of this form for additional information about Congregation Or Ami's various funds.

CONTRIBUTION FORM TO CONGREGATION OR AMI - Page 2 of 2

THESE SPECIAL FUNDS EXIST FOR OR AMI MEMBERS AND FRIENDS TO HONOR AND MEMORIALIZE LOVED ONES, TO CELEBRATE JOYOUS OCCASIONS, TO SUPPLEMENT OUR BUDGETED RESOURCES, TO ENRICH OUR PROGRAMS AND MEMBERS, AS WELL AS FOR MANY PERSONAL REASONS. PLEASE READ THIS PAGE CAREFULLY FOR MORE INFORMATION ABOUT OUR FUNDS. CALL OUR PRESIDENT, ALEX SIMON, IF YOU HAVE QUESTIONS OR WISH TO LEARN HOW AND WHERE YOU CAN DIRECT YOUR GIFT. PLEASE ASK ABOUT ESTABLISHING A NAMED FUND TO FOCUS ON A SINGLE AREA THAT WILL MEET YOU AND YOUR FAMILY'S WISHES.

FUNDS	HOW IT WILL BE USED
General Fund	To help meet projected expenses (augment dues).
Andrew Lendvay Teacher and Music Education Fund	To help our Religious School teachers further their education and to support Music Education in our school.
Babysitting Fund	To pay for babysitting.
Dorothy & Bernard Packer Educational Endowment Fund	Income used to provide for the enrichment of the Religious School.
Building Fund	To pay the mortgage.
Congregational Discretionary Fund	To provide relief to members of the congregation or community experiencing hardship, or for other needy purposes as determined by officers of the congregation and the Rabbi.
Continuing Education Fund (Adult Education)	To support the continuing education of congregants and to defray the cost of outside speakers.
Flower Fund	To provide flowers for the bema.
Harvey Lampert Memorial Garden Fund	To beautify and maintain the Harvey Lampert Memorial Garden.
High Holy Day Fund	To enrich these special services.
Landscaping Fund	To beautify our grounds.
Library Fund*	To maintain our library for adults and children. *To have a book plate inserted, a minimum donation of \$20 is requested.
Music Fund	For the music library used at services and festivals.
Oneg Shabbat Fund	For the wonderful food following services.
Rabbi's Discretionary Fund*	To enhance the mission of the congregation as determined by the Rabbi. *Contributions to this fund should be made payable to "Rabbi's Discretionary Fund".
Refurbishment Fund	To maintain and make improvements to the building and grounds.
Religious School Fund	To provide enrichment activities for our school children.
The Scholarship Fund*	To provide funds for needy children to attend Religious School. *This fund is in memory of David & Clara Sack, Margarete Hirsch, and Susanne Hirt.
Sustenance/Social Action Fund	To aid and improve our community.
Torah Fund	To purchase Judaic objects to enhance our services and festivals.

September 20, 2009 / 2 Tishrei 5770

Many Jews will call this day the “2nd day of Rosh Hashanah.” Reform and Israeli Jews will call this “the day after Rosh Hashanah.” At Or Ami, we’re calling it ...

HIGH HOLIDAY FAMILY WORSHIP/ WORKSHOP

10:00 - noon, in lieu of regular hours

This family program is open to everyone – invite your Jewish friends who have kids. This will be a great opportunity to show them Or Ami at its best.

NOTE: This event will take the place of the afternoon “Children’s Service” that we have traditionally offered on the afternoon of Rosh Hashanah. But it will be expanded to include many more family activities:



- Short service
- Stories from Mr. G
- Learn how to blow a shofar
- Create your own “Book of Life”
- Learn about the Jewish calendar
- Perform Tashlich
- Adopt a Jewish name
- Apples & honey
- A birthday cake for the world

followed by a hotdog picnic at noon



OR AMI'S FUND RAISING COMMITTEE PRESENTS 2009/2010 CONGREGATIONAL CALENDAR 5770

**ADVERTISE IN OR AMI'S 5770
CONGREGATIONAL CALENDAR**

**Congregation
Or Ami**

2009/2010
Calendar 5770

**A cost effective way of reaching our
community and your target audience.**

Banners Ads are only \$250

**Or Ami and the Community Come Together in Homes
Across Richmond Celebrating the New Year and Good
Times**

2/3 Page Only \$400

**Business Card
Ads Only \$180**

CALENDAR ADS COST

- \$180 Business Card Ad
- \$250 Banner Ad
- \$400 Ad 2/3 Page Ad,
- \$500 3/4 Page Ad.
- \$18-\$36 Birthdays, Anniversaries, Bar/Bat Mitzvahs,
etc. announcements

■ Cost Per-Calendar Ad: 1500 Run and Ad sizes

■ Business Cards:	12 cents	(3 1/2" X 2")
■ Banners:	16 cents	(8" X 1 1/2")
■ Back Banner	16 cents	(2 1/2" X 5")
■ 2/3 Page	26 cents	(6" X 11")
■ 3/4 Page	33 cents	(Special Cut)

**Space is Limited so.....
Contact: Maxine Margolis at:
Cell: 804-433-9954
Email: JPMargolis@yahoo.com**

**Congregation Or Ami at:
Phone: 804-272-0017
Email: office@or-ami.com
Make checks out to: Or Ami
9400 Huguenot Rd, Richmond, 23235**

KESHER ISRAEL - A TAGLIT-BIRTHRIGHT ISRAEL TRIP



TAGLIT · תגליט
BIRTHRIGHT ISRAEL
www.birthrightisrael.com

Dear URJ Professionals:

Registration for the Winter 2009-10 season of Taglit-Birthright Israel trips with URJ Keshet opens on September 9, 2009 at <http://www.keshetbirthright.org>

SHARE THE GIFT OF ISRAEL WITH ELIGIBLE 18-26 YEAR-OLDS

If a member of your community is eligible for the Taglit-Birthright Israel program, we will make sure that their application is handled with priority status so long as they sign-up with URJ Keshet. As a reminder, eligibility criteria are: Jewish, 18-26, and first time in Israel on a peer program.

Winter 2009-10 trips will be offered in December and January, and we expect that registration will be closing very, very early this season — most probably within 24-48 hours of opening on September 9th. Accordingly, it is critical that applicants plan ahead to register on time.

HOW TO REFER A MEMBER OF YOUR COMMUNITY

To refer a member of your community, simply email us to let us know the name of the person for whom we should be on the lookout. Please make sure that the applicants knows to select URJ's Keshet trip by starting the application process at <http://www.keshetbirthright.org>.

Applicants can also sign up now for an "Early Update List" in order to learn more about the registration process in advance of September 9th.

Thank you in advance for helping us spread the word about this unique way to experience the Taglit-Birthright Israel gift with the URJ.

URJ Keshet Israel Team
info@keshet-birthright.com



RELIGIOUS SCHOOL 2009-2010 CALENDAR*

August 30, 2009	Faculty meeting & In-Service	
September 6, 2009	Labor Day Weekend □ NO SCHOOL	
September 13, 2009	Opening Assembly	Sat. Sep. 19 □ Rosh Hashanah
September 20, 2009	Rosh Hashanah Family Activities	
September 27, 2009		Mon. Sep. 28 □ Yom Kippur
October 4, 2009	Sukkot Program, Torah Tots	Sat., Oct. 3 □ Sukkot begins
October 11, 2009		Sat., Oct. 10 □ Simchat Torah (Reform)
October 18, 2009	Torah Tots	
October 25, 2009		
November 1, 2009	Torah Tots	
November 8, 2009		
November 15, 2009	Torah Tots	
November 22, 2009		
November 29, 2009	Thanksgiving Weekend □ NO SCHOOL	Thur., Nov. 27 □ Thanksgiving
December 6, 2009	Torah Tots	Fri., Dec. 11 □ Erev Hanukkah
December 13, 2009	Chanukah Family Party	
December 20, 2009	Winter Vacation □ NO SCHOOL	Mon., Dec. 21- Fri., Jan. 1 □ Winter Vacation
December 27, 2009	Winter Vacation □ NO SCHOOL	
January 3, 2010	Winter Vacation □ NO SCHOOL	
January 10, 2010	Torah Tots	
January 17, 2010	M.L. King assembly	Mon. Jan. 18 □ ML King, Jr. Day
January 24, 2010	Torah Tots	Sat., Jan. 30 □ Tu .BiShevat
January 31, 2010		
February 7, 2010	Torah Tots	
February 14, 2010	RCJE Teacher Workshop	Mon., Feb. 15 □ Presidents Day
February 21, 2010	Torah Tots	
February 28, 2010	Purim Carnival	Sat. Feb. 27 □ Erev Purim
March 7, 2010	Torah Tots	
March 14, 2010		
March 21, 2010	Torah Tots	
March 28, 2010	Model Seder	Mon., Mar. 29 □ Erev Pesach
April 4, 2010	Pesach/Spring Break □ NO SCHOOL	Mon., Apr 5 □ Fri., Apr. 9 □ Spring Break
April 11, 2010	Spring Break □ NO SCHOOL	Sun., Apr. 11 □ Yom HaShoah
April 18, 2010	Torah Tots	Mon., Apr. 19 □ Yom HaAtzmaut
April 25, 2010		
May 2, 2010	Torah Tots	Sun., May 2 □ Lag BaOmer
May 9, 2010	Mothers Day / Snow make-up	Sun., May 9 □ Mother's Day
May 16, 2010	Family Mitzvah Day	Tue., May 18 □ Erev Shavuot
May 23, 2010		
May 30, 2010	Memorial Day Weekend □ NO SCHOOL	

*Schedule subject to change □ Check Temple Bulletins, emails, & website.



September 2009 - Congregation Or Ami

Sun	Mon	Tue	Wed	Thu	Fri	Sat
		1	2 Richmond Quilt Guild, 9 a.m.	3	4 Shabbat Service, 7:30 p.m.	5 Torah Study/Brunch, 10:30 a.m.
6 NO Religious School Labor Day Weekend	7 Labor Day	8	9	10 Board Meeting, 7:30 p.m.	11 Bon Air Artists Assoc., 9 am - 12:30 pm Congregational Potluck Dinner, 6:15 pm Shabbat Service, 7:30 p.m. Board Installation and Cantor Riki	12 Torah Study/Brunch, 10:30 a.m. Movie Night, 6:30 pm <i>The Librarian - Return to King Solomon's Mines</i>
13 Religious School, 9 a.m. - 12 p.m. 8:30 - Registration 9:15 - Assembly 9:45- Classrooms and Parent Meeting 12:00 - Dismissal	14 Personnel Committee Meeting, 7:15 p.m. Finance Committee Meeting, 7:30 p.m.	15	16 Bulletin Deadline for October Articles	17 Membership Committee Meeting, 7 p.m.	18 Erev Rosh Hashanah, 7:30 p.m. at the JCC	19 Rosh Hashanah Morning, 10:30 a.m. at the JCC
20 High Holiday Family Worship / Workshop, 10am - 12pm In lieu of regular hours followed by a Hotdog Picnic at noon	21	22	23	24	25 Shabbat Service, 7:30 p.m.	26 Torah Study/Brunch, 10:30 a.m. Richmond Folk Music Society, 8 p.m. Davies, Brencheley, Davies
27 Religious School, 9 a.m. - 12 p.m. Erev Yom Kippur, 7:30 p.m. Kol Nidre at the JCC	28 YK Morn., 10:30 a.m. Family Ser, 2p.m. Rabbi's Disc., 3 p.m. Afternoon/Yizkor Ser, 4:30 p.m. followed by Break-the-Fast at the JCC	29	30			



L' Shana Tovah

*Wishing You a Peaceful and Happy
Holiday, and Health and Success for
the New Year*

from

Rabbi Ben and Karen Romer

and the Board of Directors



Or Amians enjoyed a delightful dinner at Thai's MaMa Restaurant...



The Or Ami Beacon Issue 165 September 2009



THE OR AMI BEACON
Light of our People

Congregation Or Ami
a Dynamic Sacred Community
Grounded in Reform Judaism

9400 Huguenot Road | Richmond, VA 23235 | (804) 272-0017
www.or-ami.com

NON-PROFIT ORG.
U.S. POSTAGE PAID
RICHMOND, VA
PERMIT #261

- Dr. Ben Romer, Rabbi*
- Alex Simon, President*
- Elaine Ragone, Cantorial Soloist Emerita*
- David Goldsmith, Director of Education*

Affiliated with the Union for Reform Judaism

