



THE OR AMI BEACON

Light of our People

MONTHLY BULLETIN OF
CONGREGATION OR AMI

ISSUE 177
OCTOBER 2010

THIS ISSUE

- Rabbi's Reflections P.2
- Presidents' Message P.3
- Or Ami Pictures P.4
- Religious School News P.5-6
- Torah's Readings P.7
- All in the Family P.8
- Contributions P.9
- Contributions Form P.10
- Yahzreits P.11
- Mission Statement P.11
- Monthly Calendar P.12
- Volunteer Survey P.13
- Or Ami Pictures P.14
- Are you Hungry? P.15
- OATY Bagel Order Form P.16
- Social Action Happenings P.17
- Community News P.18-22
- Tree of Life Donation Form P.23



*September was rich with
evenements and holidays.
Check out our pictures from the
High Holidays, Sukkot and
Simchat Torah.*



RABBI ROMER'S REFLECTIONS

What a wonderful Days of Awe we had. I still feel the excitement from our coming together and creating the largest Or Ami Kehillah Kedoshah ever. We actually ran out of prayer books! We had our largest participating at Family Worship at both Rosh Hashanah and Yom Kippur. Go Mr. G! We filled the entire November Auditorium for Yizkor- over 400 joining us. Our religious school is growing. Our congregation is growing. People are energized! They are excited by what we are becoming. We are creating the dream of

Now that we are through the High Holy Days it is time to start working on our laundry lists. The only genuine way to find that Spiritual Enlightenment is engaging is fixing the everyday world in which we live. How? By attempting to genuinely live those words we spoke together so eloquently during the holidays. By bringing alive the power of those thoughts and ideas through action. By feeding the hungry- bringing something for the Food Bank every time we join together on Shabbat. By making sure every child and family in our community seeking to learn about their Jewishness is able to do so. We will need to all make that happen. Especially those of us without children in the religious school. We have an incredible youth group and an exceptional youth leader in Nancy Nelson. These young adults are our future Jewish leaders learning how to be ethical and moral leaders. We have the moral responsibility to assure they attend all events possible to rise to the challenge.

We have accomplished this by choosing an original Or Ami value- seek to discover the creative and meaningful way of Jewish discovery. To know at the essential spiritual level that "if you always do what you have always done, you'll always get



what you always got" you will cease not just to grow, you will cease. We continue to push forward discovering the creative meaning in old and new forms of worship and Jewish experience and celebration.

"The human soul is a tiny lamp kindled from the Divine torch; it is the vital spark of heavenly flame."
-BABYLONIAN TALMUD
Berachot 10a

This month we once again begin reading our origin stories, our Genesis. Each time I read this I discover something new. These stories are never the same as the last time I

looked at them. I now understand the saying in Pirkei Avot (Sayings of the Founders) 5:22 "Turn it, and turn it, for everything is in it. Reflect on it and grow old and gray with it. Don't turn from it, for nothing is better than it." *Ben Bag Bag* (yeah, that's an odd name) is talking not just about Torah as a document; he is talking about Torah as a living teaching that is capable of entering our everyday lives. The place we find the instructions for cleaning (fixing) our everyday world.

In the Morning Prayer service, in the prayer following the Barechu, the prayer that connects the Source of Creation with Creation, it says that this source "renews the work of creation daily." You and I have the power to bring into this world, every day, new creative ways of lifting our Jewish living higher and higher. Or Ami root values demand that we learn and experience our traditions and then find the way to make them newer and newer for us and our future. We have the spiritual responsibility to discover each potential new path to creating our Jewish futures. We must assure that we don't do what we have always done. The ennui within so many synagogues is that they are stuck doing just that and what you get from it is not creating anything new. Let us assure that our Sacred Community seeks to build fully the future. And every old and new soul within Or Ami is a critical link in the expanding and deepening bonds that strengthen our Kehillah Kedoshah.

L'Shalom,
Rabbi Ben

FROM THE CO-PRESIDENTS

Alan Freedman and Judy Katzen



The cool air is starting to settle in and we are forging ahead with our routines. The High Holy Days were tremendously successful. The amount of planning and hard work to execute such flawless services is sometimes taken for granted. Our deepest gratitude is extended to the Liturgy Committee chaired by Renee Gould; Rabbi Ben, Cantor Riki, pianist Billy Yeager and violist Yakov Tulchinsky for their great work and infusing life into our service. We would like to thank all of those who participated in the services by offering their voices to our sacred community. What a great tradition of having parents and their children participate in our Torah readings that we have embraced. We would also like to thank Jon Berlinerman for recruiting our meeters and greeters; Lisa Wilburn and the Membership Committee for greeting our current and prospective members; Renee Gould and Art Matz for setting up our sanctuary; and all of our greeters who made all us feel so welcome. Great work everyone!

The religious school is underway and more than 100 students are enrolled. This a testament to the passion of our Education Director, David Goldsmith and our Youth and Family Education committee headed by David Kane.

We have also just completed the time of year when we have reflected on our individual lives and how we are going to sort our laundry. It is always a difficult task to look at ourselves and admit that we have faults. It is even harder to change our habits to correct those faults. We resolved to make our lives better and the lives

of those around us better. This self-assessment should be ongoing and not just occurring for two weeks out of our year. Simply put, we are works in progress.

As we work on improving ourselves, we need to make an effort to improve Or Ami. It is not solely the responsibility of the Board or the committees. Moving us forward as a sacred community is a responsibility all of us share. This is a challenge with which we are faced that is steeped in the beliefs and traditions embedded in our mission statement: "Or Ami... is a dynamic, sacred community – Kehillah Kedoshah – welcoming people of all ages and backgrounds who seek spiritual fulfillment and involvement grounded in principles of the Reform Jewish Movement." Therefore, how do we welcome all who are seeking spiritual fulfillment and religious instruction? During these difficult economic times, we must ask how do we solidify the foundation of our children and meet the needs of our adult members. We need to identify ways to make people see that we value who we are and what we do. Too often we look at our dues as fees for service and we do not realize the value of it all. Is it not ethical for us as individuals and a congregation to ensure that Or Ami has the ability to carry out that mission? To that end, the Finance Committee has been working diligently to ensure that we are able to successfully navigate through the challenging economic times with which we all face. We will be sharing strategies proposed by the committee in future communications.

It is vital that we evaluate what we are doing to ensure that we can collectively afford to welcome all. We must also be creative in inspiring our members to want to be involved. It is not just up to the Rabbi, Religious School Director, the Board of Directors or the committees – whoever those individuals are. What will it take for each of us to see Or Ami as not simply a building or the place where we drop our children off once a week or a place to enjoy services, onegs, etc – supplied by someone else? In other words, what is the value of Or Ami to you?

Ben Romer, **Rabbi** (381-7894)
Alan Freedman, **Co-President**
(768-4732)

Judy Katzen, **Co-President**
(741-1226)

Elaine Ragone, **Cantorial Soloist**
Emerita (740-8673)

David Goldsmith, **Director of**
Education (740-0869)

.....
Congregation Or Ami Beacon

September 2010,

Issue No. 175

Published monthly by
Congregation Or Ami

9400 Huguenot Road
Richmond, Virginia 23235

Phone: 272-0017

Fax: 272-3931

Email: office@or-ami.com

Website: www.or-ami.com

.....
Linda Heuser (272-2887)

Vice President

David Aschheim (379-3523)

Treasurer

Marsha Hanzel (320-1487)

Financial Secretary

Anita Wolf (502-4632)

Recording Secretary

Ellen Hofheimer (741-7426)

Historian

.....
Directors At Large:

Alan Arkava (272-7575)

Dell Berlinerman (741-0489)

Myer Berman (320-0838)

Stanley Feuer (379-5956)

Mitchell Gordon (955-9052)

Bruce Gould (230-4103)

Jeffrey Haykin (364-3525)

David Kane (233-1103)

Pat Levy-Lavelle (358-0865)

Heather Nees (608-1280)

Nancy Nelson (285-9108)

Steve Novey (794-1715)

Steve Saltzberg (360-1440)

Sue Shires (477-7207)

Mendel Silbert (740-5835)

Rosh Hashanah Pictures

Family Service and Taschlich at Or Ami



THE JOY KRAMER RELIGIOUS SCHOOL OF OR AMI

A NOTE FROM MR. G - David Goldsmith, Educational Director

Dear Parents,

I was recently talking with a prospective member who couldn't decide whether to send his kids to our Religious School or to the one at the Chabad Lubavitch Center. These two schools are the fastest growing supplementary Jewish schools in Richmond, even though they represent very different -- but equally valid -- interpretations of Jewish thought and practice. What they do have in common is that both are supported by extremely warm, welcoming congregations.

But I asked this prospective member which school best represented the Jewish thought and practice as reflected in their home. "Do you keep kosher? Are you shomer shabbos, strict observers of Shabbat? Are you willing to adopt strict halachah (ritual observance)?"

I believe that a disconnect between a child's religious education and the religion as practiced in the home can lead to confusion and possibly rejection of a child's Jewish identity. If the school says "This is what Jews do" and the child doesn't observe that being done at home, then what can the child conclude?



This is true even within Or Ami. It is very important that the Judaism being taught in the class is reflected in the home. Parents must be partners in the Jewish education of their children in order for it to be effective. It is not a

coincidence that the Hebrew words for "parents", horim, and for "teachers", morim, come from the same root, as does the word "Torah".

Please get involved in your child's Jewish education. Impress on him or her the importance of this education. Expand your own Jewish learning through adult education programs sponsored by the congregation, the JCC, or on the college campuses. Make Or Ami your family's home-away-from-home. Consider bringing more Jewish customs into your home. Together we'll make real mensches (decent, giving human beings) and proud Jews out of these wonderful young people.

David Goldsmith
Education Director

TORAH TOTS

We still have space in our Torah Tots program for kids who are 3 and 4 years old. Approximately every other week the Tots meet from 10:30 until noon and have a great time with arts and crafts, music, games, stories and much more. This month the Tots will meet on October 10 and 24. Call David Goldsmith 740-0869 if you have any questions.

THANK YOU

September was quite a busy month. We just want to thank our faculty, our Education Committee, and all the volunteers that helped make the High Holiday Family Services so smooth and enjoyable.

BARECHIM HABA'IM – WELCOME!

We made a lot of new friends in September and enrolled many new students. At this writing, they are still coming. Next month we'll list them.

PARKING LOT SAFETY ON SUNDAYS

We need your help to keep your children safe! Because of our growth and limited parking, we ask that you adhere to these basic safety guidelines:

1. When you come to pick up your children at noon, you must either

.... Park in a designated pull-in parking place (NOT on the turn-around), come in, and escort your child(ren) to your car. This is the preferred method for those of you with children under 10 years old. With children under 7, hold their hand when you cross the parking lot because on-coming cars may not see them.

Or ...

.... Stay in your car in the circle ready to pull up. If your child is not out by the time you are in front of the doors, either find a parking spot and come in, or pull around the circle again so that you do not hold up cars behind you.

2. All traffic should move counter-clockwise around the circle.

3. DO NOT yell or motion your child (even teens)

to cross the parking lot. They should wait until you are in front of the doors to be picked up. Please be patient.

4. Drivers should remain alert and undistracted (i.e. no talking on cell phones).

5. Special care should be taken when turning onto Huguenot, especially when turning left. Sometimes it's safer to turn right and make a u-turn at the next intersection if you need to head north.

6. If someone other than yourselves or someone you've designated on the registration form will be picking up your child(ren), let Mr. G. know by email (before that Sunday) or by handwritten note. We will not allow a child to leave with someone other than those designated previously.

SAFETY IS EVERYONE'S RESPONSIBILITY!
Please help us to insure that our students return home in the same shape that they arrived at the Temple (maybe even better!)

Rabbi Ben Romer 381-7894 rabbiromer@gmail.com

Alan Freedman 768-4732 adfreedman@vcu.edu

Judy Katzen 741-1226 jskatzen@usa.net

Linda Heuser 272-2887 linda_heuser@verizon.net

David Aschheim 379-3523 daschheim@comcast.net

Marsha Hanzel 320-1487 mwhanzel@comcast.net

Anita Wolff 502-4632 alwolff55@yahoo.com

Ellen Hofheimer 741- 7426 ellenhof@verizon.net

Alex Simon 266-1676 asimonatty@aol.com

David Goldsmith 740-0869 OrAmiSchool@gmail.com

Alan Arkava 272-7575 aaarkava@gmail.com

Dell Berlinerman 741-0489 adam1207@hotmail.com

Myer Berman 320-0838 joanberman@comcast.net

Stan Feuer 379-5756 stanleyfeuer@aol.com

Mitchell Gordon 955-9052 capricorn111@hotmail.com

Bruce Gould 230-4103 bgould6801@aol.com

Jeffrey Haykin 364-3525 vaangler@verizon.net

David Kane 233-1103 kanedb@verizon.net

Pat Levy-Lavelle 358-0865 pslavelle@yahoo.com

Heather Nees 608-1280 heather510@sprynet.com

Nancy Nelson 285-9108 nancy.nelson5@comcast.net

Steve Novey 794-1715 snovey@aol.com

Steve Saltzberg 360-1440 stevesaltzberg@gmail.com

Sue Shires 477-7207 s.shires@verizon.net

Mendel Silbert 740-5835 MNSilbert@aol.com

TORAH READINGS FOR OCTOBER



OCTOBER 2/3:

- **Torah: Genesis (Bereisheet) 1:1-6:8**
- **Haftarah: Isaiah (Yeshayahu) 42:5-43:10**

Two creation stories. I prefer the first one. Male and female created at the same time. Both sides of the Eternal. Male and female or we can't understand the wholeness of creation and sacredness. Don't let anyone tell you otherwise. This should never be a male centrist or entitled world. From the beginning the only truly holy way is one that is equally shared with male and female creating a whole that will bring Oneness again.

OCTOBER 9/10

- **Torah: Noah (Noach) Genesis (Bereishit) 6:9-11:32**
- **Haftarah: Isaiah (Yeshayahu) 54:1-55:5**

We all know the Noah story pretty well. Humanity acts badly, God gets upset and destroys all of humanity except Noah and his family. We usually look at

it as an instance of God's anger and passion and our inability to come through for God the right way. In the recent movie "Evan Almighty" we are presented a different approach. What if this was a lesson from the Source to us to take the opportunity to love one another and our world. The animals went in "side by side". Together, as equals, with each other not against. Noah and his family (well, Evan and his) figure it out and do the same. Side by side as a family, linked in love and support with each other. The tale is a lesson for us to come together.

OCTOBER 16/17

- **Torah: Lech Le'cha Genesis (Bereishit) 12:1-17:27**
- **Haftarah: Isaiah (Yeshayahu) 40:27-41:16**

Are you a risk-taker? Avram and Sarai certainly are! They are the original Jews-by-Choice. They go forward from their spiritual comfort zone in their homeland and seek out a more meaningful encounter with the Holy. Each of us should be willing to step forward this way. That is what Reform Judaism is all about spiritually. Are you ready?

OCTOBER 23/24

- **Torah: Shabbat Vayera Genesis (Bereishit) 18:1-22:24**
- **Haftarah: 2 Kings (Melachim Bet) 4:1-37**

In our reading this week we find the Akedat Yitzchak- the binding of Isaac. (We read it

on Rosh Hashanah). While the text says that God is testing Abraham, I can see this only the other way around. Abraham is doing the testing. No way would he willingly surrender his son in such an immoral action. It is Abraham who pushes the action, forcing God to intervene before anything happens. What a great story!

OCTOBER 30/31

- **Torah: Hayyei Sara Genesis (Bereishit) 23:1-25:16**
- **Haftarah: 1 Kings (Melachim Alef) 1:1-31**

It reads the "Life of Sarah" but recounts her death. We are experiencing the transition of our narrative to the next generation. Abraham's death is also here. A wife is found for Isaac and the story of the encounter is really a special one. Another instance in the Torah of radical welcoming is when Rebecca swiftly moves to provide water for Elazar's and his camels. Our narrative is made so much more human and accessible when we realize our cultural heroes are a lot like us. Not like Greek gods or heroes. Human.



ALL IN THE FAMILY

RABBI ROMER IN THE COMMUNITY:

Last month, Rabbi Romer:

- participated in the Richmond Peace Festival
- attended the Eid al Fitr Dinner sponsored by the Islamic Center
- attended the Bon Air Clergy Breakfast
- attended the Richmond Jewish Federation Executive Committee meeting
- attended the WJCC Thank You Event for the Maccabi Games
- attended the Chesterfield County Public School's Multi Cultural Advisory Committee meeting (as a member)
- delivered the opening Biblical Reflection at the Micah Initiative Fall Kick Off
- delivered the opening prayer at the Metropolitan Richmond Habitat for Humanity dinner

REFUAH SHELEIMAH - SPEEDY RECOVERY TO:

Richard Diamond, Ruthanne Goldsmith, Paul Goldsmith, Herold Hofheimer, Sam Katzen, Sheila Schnitt, and Anita Wolff

NEW MEMBERS:

*Bennat & Yana Drazner
9462 Indianfield Drive
Mechanicsville, Virginia 23116
#550-1784*

*Robert & Debbie Moskovitz
13601 Heth Drive
Midlothian, Virginia 23114
#464-1399*

*Mark Lederway
9912 Channing Circle
Richmond, Virginia 23235
#447-7989
#901-568-7240*

*Carl B. Weiss
12406 Greenwich Drive
Glen Allen, Virginia 23059*

Be sure to let us know when something special happens in your family, so that we can pass the word along to the rest of the Congregation

Or Ami Wish List

ITEM

CONTACT

LCD projector & screen

Office

Rolling computer cart

Heather Nees

School desks

David Goldsmith

Tables and sanctuary chairs

Renee Gould

Please call the office for the contact information or to allow the "contact" person to get in touch with you.



CONTRIBUTIONS

GENERAL FUND

- In honor of Evelyn Lampert and Dr. Martin Cohen - *Dr. Robert & Evelyn Glasser*
- In honor of Renee Gould - *Rabbi Ben & Karen Romer*
- In honor of Judy Katzen and Alan Freedman - *Rabbi Ben & Karen Romer*
- Wishing Sheila Schnitt a speedy recovery - *Stan Feuer & Eileen May*
- Wishing Ruthanne Goldsmith a refuah shleimah - *Stan Feuer & Eileen May*
- In memory of Irwin Wein - *Sylvia Wein*
- In honor of Lori Levy, Steve Levine, and Rachel Danielsen for the fantastic job she did at her Bat Mitzvah with Or Ami's extra special touch - *Benjamin & Sandra Levy*
- In honor of our anniversary - *Rabbi Ben & Karen Romer*
- In honor of Stefanie Papps and her contribution to our community. She will be missed. - *Stan Feuer & Eileen May*

HIGH HOLY DAY FUND

- In memory of Keith Heller, Robert Heller, and Mark Heller - *Elizabeth W. Jones*
- *George & Gail Ball*
- *Allen & Sheila Burris*
- *Albert & Pauline Cooper*
- *Laurie Falk Coulter*
- *Alvin & Sheila Davidson*
- *Diana Gabay-Selby*
- *Ronnie E. Goldman*

- *Lisa L. Levine*
- *Sheldon & Margery Lustig*
- *Jurgen & Joan Maitre*
- *Jeffrey & Jill McDaniel*
- *Leslie T. Moses*
- *Evan & Michele Nelson*
- *Tanya Perelman*
- *Dan & Marcia Robbins*
- *Catherine Stone Rolfe*
- *Marc H. Rutman*
- *Brent E. Smith & Laurel A. Newill*
- *Emir & Larisa Vejzovic*

RABBI'S DISCRETIONARY FUND

- In appreciation for the Yom Kippur services - *Michael & Amy Miller*

ADULT EDUCATION FUND

- *Jonathan Lebolt*

CARITAS FUND

- *Patricia A. Doniger*

CHAIR & TABLE FUND

- *Patricia A. Doniger*

LATTE TO LATKE FUND

- *Rabbi Ben & Karen Romer*

SACK/HIRSCH SCHOLARSHIP FUND

- *Adriana & Robert Brown*
- In honor of David Goldsmith conducting worship services - *Rabbi Ben & Karen Romer*

.....

Contributions to a fund of the Congregation may be made in honor or in memory of a family member or a friend to any of the congregational funds, such as the Dorothy & Bernard Packer Educational Endowment Fund, Building Fund, Congregational Discretionary Fund, Flower Fund, General Fund, Harvey Lampert Memorial Garden Fund, The Scholarship Fund (in memory of David & Clara Sack, Margarete Hirsch, and Susanne Hirt), Sustenance/Social Action Fund, or another fund mentioned elsewhere.

CONTRIBUTION FORM TO CONGREGATION OR AMI - Page 1 of 2

I/We wish to make the enclosed contribution to Congregation Or Ami in the amount of \$ _____

TEMPLE FUNDS

- | | |
|--|--|
| <input type="checkbox"/> General Fund | <input type="checkbox"/> Congregational Discretionary Fund |
| <input type="checkbox"/> Landscaping Fund | <input type="checkbox"/> Refurbishment Fund |
| <input type="checkbox"/> Andrew Lendvay Teacher and Music Education Fund | <input type="checkbox"/> Continuing Education Fund (Adult Education) |
| <input type="checkbox"/> Library Fund | <input type="checkbox"/> Religious School Fund |
| <input type="checkbox"/> Babysitting Fund | <input type="checkbox"/> Flower Fund |
| <input type="checkbox"/> Music Fund | <input type="checkbox"/> Sack/Hirsch Scholarship Fund |
| <input type="checkbox"/> Dorothy & Bernard Packer Educational Endowment Fund | <input type="checkbox"/> Harvey Lampert Memorial Garden Fund |
| <input type="checkbox"/> Oneg Shabbat Fund | <input type="checkbox"/> Sustenance/Social Action Fund |
| <input type="checkbox"/> Building Fund | <input type="checkbox"/> High Holy Day Fund |
| <input type="checkbox"/> Rabbi's Discretionary Fund | <input type="checkbox"/> Torah Fund |

The Contribution is to be:

- In honor of: In memory of: In appreciation of:

.....
.....

From:

Address:

Please list the names and address of those you wish to notify:

1. Name:

Address:

2. Name:

Address:

Do you wish this contribution to be mentioned in our Temple Bulletin? Yes No

Please mail to the Or Ami Office - 9400 Huguenot Road - Richmond, Virginia 23235

Please see the reverse side of this form for additional information about Congregation Or Ami's various funds.

Yahrzeits* (Memorial Anniversary)

These names will be read on the following dates:

Oct. 1	Ralph Petrella, Sr.	10/ 1/10	Oct. 17	Lena Dzerowitz	10/22/10
Oct. 2	Herman Brooks	10/ 8/10	Oct. 18	Helene Berz Bonnie	10/22/10
Oct. 3	Ellis Katz	10/ 8/10	Oct. 18	Ida Navickis	10/22/10
Oct. 3	Frieda Feuer	10/ 8/10	Oct. 18	Faye Schwartz	10/22/10
Oct. 5	Henry Gersh	10/ 8/10	Oct. 20	Jack Seidenberg	10/22/10
Oct. 6	Ernest Strauss	10/ 8/10	Oct. 20	Marvin Amelson	10/22/10
Oct. 8	Clara Elfer-Foldes	10/ 8/10	Oct. 22	Michael Halberstadt	10/22/10
Oct. 8	Kathryn D. Hayward	10/ 8/10	Oct. 22	Roz Schwartz	10/22/10
Oct. 8	Jules Feuer	10/ 8/10	Oct. 22	Larry Ellis Kitt	10/22/10
Oct. 9	Daniel Schwartz	10/15/10	Oct. 24	Frederick Lenke	10/29/10
Oct. 11	Thomas Liddell Ipock	10/15/10	Oct. 24	Milton Goldsmith	10/29/10
Oct. 11	Hilda Lizer	10/15/10	Oct. 25	William Greenberg	10/29/10
Oct. 12	Jean Levinsky	10/15/10	Oct. 27	Mildred Preville	10/29/10
Oct. 13	Nysya Futeran	10/15/10	Oct. 29	Barbara Schwartz	10/29/10
Oct. 13	Harry Katzen	10/15/10	Oct. 30	Gerson Seldin	11/ 5/10
Oct. 14	Marjorie Zensky	10/15/10	Oct. 31	Sidney Burnstein, Sr.	11/ 5/10
Oct. 16	Marvin L. Bloom	10/22/10			

Contributions to Or Ami memorializing a loved one may be sent to the Or Ami office. You may specify a fund to which the contribution should go, such as the Andrew Lendvay Teacher and Music Education Fund, Continuing Education Fund (Adult Education), High Holy Day Fund, Landscaping Fund, Library Fund, Music Fund, Oneg Shabbat Fund, Refurbishment Fund, Religious School Fund, Torah Fund, or another fund mentioned elsewhere.

*Yahrzeit: Remembering on the Anniversary of a Death

The yahrzeit is a time of remembering the dead by reciting the Kaddish, lighting a 24-hour candle, and remembering the person who has died.

SAYING KADDISH

The last column of the Yahrzeit list gives the Shabbat service at which your loved one's name will be read. Please call Maria at the Temple (272-0017) if you would like to change the date a name will be read, or if you wish to add to the list.

Please call the Temple office if you would like to change the date a name will be read.

OUR MISSION STATEMENT

Congregation Or Ami, "Light of My People," is a dynamic, sacred community — Kehillah Kedoshah — welcoming people of all ages and backgrounds who seek spiritual fulfillment and involvement grounded in principles of the Reform Jewish Movement.

We affirm fresh pathways and approaches to our core values:

Torah: Jewish study, education, knowledge, and values.

Avodah: Jewish prayer, worship,

creative liturgy, and prayer based on Jewish thought.

Gemilut Chasidim: deeds of loving kindness, actively embracing our sacred responsibilities to each other, our community, our nation, and our world.

Thus, individually and as a congregation, we interpret the tenets of social action and ethical imperatives in our lives through our relationship with Torah, prayer, and tikkun olam (making our world whole.)



OR AMI CARES

Please let the Temple office or Rabbi know if a family member is in the hospital or if other situations arise when the congregation may be of assistance or comfort.

Changes in hospital privacy rules prohibit officials from contacting the Temple, so we aren't always aware of situations unless family or friends notify us.



October 2010 - Congregation Or Ami

Sun	Mon	Tue	Wed	Thu	Fri	Sat
					1 ✍️ Bon Air Artists Assoc., 9 am -12:30 pm ✳️ Shabbat Service, 7:30 p.m.	2 ✳️ B'nai Mitzvah of Sydney and Jarrett Nees, 10:30 a.m. ✳️ <i>Va Holocaust Museum</i> ✳️ An Evening of Language & Laughter with Mr. Lederer, 7:30 p.m.
3 🏫 Religious School, 9 a.m. - 12 p.m. ✳️ Confirmation, 1 p.m. 🎵 Klezmer Rehearsal, 7:15 p.m.	4 Columbus Day 🏦 Finance Committee Meeting, 7:30 p.m.	5	6 — Richmond Quilt Guild, 9 a.m. ✳️ Parents of Quirky Kids Jewish Journey Group, 7 p.m.	7 👉 Board Meeting, 7:30 p.m.	8 ✳️ Shabbat Service, 7:30 p.m.	9 ✳️ Torah Study/Brunch, 10:30 a.m.
10 🏫 Religious School, 9 a.m. - 12 p.m. 🏫 Torah Tots, 10:30 a.m. - 12 p.m. ✳️ Confirmation, 1 p.m. 🎵 Reel Theology Movie Night, 6:30 p.m. "Defiance"	11 Columbus Day 🏦 Finance Committee Meeting, 7:30 p.m.	12	13 👉 Personnel Team Meeting, 7:30 p.m. 🎵 Klezmer Or'Ami'm at Beth Sholom Woods, 7 p.m.	14	15 — Congregational Potluck Dinner, 6:15 pm ✳️ Shabbat Service, 7:30 p.m. 👉 Deadline for Submission of November Beacon Articles	16 ✳️ Torah Study/Brunch, 10:30 a.m. 🎬 Movie Night, 6:30 pm <i>Percy Jackson and the Olympians – The Lightning Thief</i>
17 🏫 Religious School, 9 a.m. - 12 p.m.	18	19 👉 Adult Learning Committee Mtg., 7 p.m.	20 ✳️ Parents of Quirky Kids Jewish Journey Group, 7 p.m. 👉 Social Action Committee Mtg., 7 p.m.	21 👉 Membership Committee Meeting, 7 p.m.	22 ✳️ Shabbat Service, 7:30 p.m.	23 ✳️ Torah Study/Brunch, 10:30 a.m.
24 🏫 Religious School, 9 a.m. - 12 p.m. 🏫 Torah Tots, 10:30 a.m. - 12 p.m. 🎵 Klezmer Rehearsal, 7:15 p.m.	25	26	27	28	29 ✳️ Shabbat Service, 7:30 p.m.	30 ✳️ Torah Study/Brunch, 10:30 a.m. 🎵 Richmond Folk Music Society, 8 p.m. <i>Andrew Calhoun</i>
31 🎃 Halloween 🏫 Religious School, 9 a.m. - 12 p.m.						

VOLUNTEER SURVEY

The mission statement of Or Ami states that we are, “a dynamic, sacred community - Kehillah Kedoshah-welcoming people of all ages and backgrounds who seek spiritual fulfillment and involvement grounded in the principles of the Reform Jewish Movement”. In order to be welcoming to all, it is imperative for each of us as individuals and as members of a community to ensure that Or Ami has the ability to carry out our mission.

You are a vital part of making our world whole. Volunteering your time to whatever extent you are able (ie. single activity or committee member) is welcomed and highly encouraged. Please complete this form and indicate your interest and skills, even if you are unsure as to their application at Or Ami, or simply state that you are willing to donate your time. Please add any additional areas of interest.

Name _____ Phone _____ Best time to call _____
 Occupation _____ (if retired, what did you do?) _____
 Email _____
 Skills _____ Hobbies & Interests _____

Please initial areas of interest. If you do not see any that apply to you, please add as many as you wish.

Initial	Activity	Initial	Activity
	Special events: Hanukah, Purim, Passover (circle)		Youth Group
	Teaching in Religious School or being a sub		Assisting with Friday night Onegs
	Aide in Religious School		Friday night greeter
	Clerical work in Or Ami office		Working in our library
	Computer work, area of expertise: _____		Fundraising
	Maintenance: electrical, carpentry, plumbing, painting (circle)		Social Action
	Landscaping or planting		Liturgy
	Caring Committee		Safety & Security of our building
	Phone calls from home		Adult Education
	Written communications from home		Website design

I am willing to volunteer _____ hours per day/week/month (please circle)
 For any questions, please contact the Or Ami office at 804-272-0017.

***Please return to:
 Volunteer Survey
 Congregation Or Ami
 9400 Huguenot Road
 Richmond, VA 23235
 Fax: 272-3931***

Sukkot Pictures



Simchat Torah Pictures



MANDELBRODT! RUGELACH! COOKIES! OH MY! - Heather Nees

It's not too early to start thinking about putting away some goodies for the holidays! Make your orders now to make sure that you're not left out!

Having a small dinner party? Need some Latkes or holiday cupcakes? We do that too! Call me and let's see what you need!

ASSORTED COOKIES - \$32.95/4 dozen

Chocolate chip | Italian snowball | Peanut butter blossoms | Maple-Walnut shortbread | Cappuccino crinkles | Orange Spice

MANDELBRODT (Jewish Biscotti)-\$7/ 2 loaves (approximately 24 pieces)

Traditional (cinnamon&raisin) | Orange-Chocolate Chunk | Cranberry & Almond | Spicy Ginger with Cinnamon Glaze

RUGELACH - \$14.00/Batch (approximately 24pcs.) Cream cheese dough with walnuts, coconut and raisins tucked inside

HARVEST BREAD - \$8 per loaf (a delicious quick bread loaded with zucchini, pears, apples, walnuts and spices)

PUMPKIN POUNDCAKE - \$8 per loaf (specify if you would like plain, chocolate chip or cranberry-walnut)

If you are interested in any of my other delicious offerings, call me and we can discuss what suits you the best!

Heather 608-1280
vrybzybaking@gmail.com

OATY NEWS - Nancy Nelson

Thank you so much to all of you who supported, in one way or another, the first monthly OATY bagel sale. We know there were a few small glitches that we are going to work on for next time, but overall I hope you were satisfied with the service and the quality of the bagels. Thanks to you it was a big success and we look forward to doing this again every month. The next deadline for orders will be October 17 with delivery the following Sunday (October 24). You can get order forms at the temple and you may leave your forms and payment in the office, or hand them to any OATY member or me.



Again, thanks for your support!
We couldn't do it without you!
Nancy Nelson

BAGEL ORDER FORM

Congregation Or Ami OATY Bagel Sale

Authentic NY Style bagels (Provided by Pirozzo's New York Bagels and Deli).

Baked Fresh on day of delivery.

Order deadline is the Sunday after Friday night Potluck.

Bagels will be available after Sunday School on the fourth Sunday of the month.

Minimum total order is ½ dozen

Name:		Phone:	
Flavor:	Quantity:	\$6.50 per ½ Dz	\$12.00 per Dz
Plain			
Garlic (by request min. ½ dozen)			
Onion (by request min. ½ dozen)			
Cinnimon/Raisin			
Everything			
Egg			
Sesame			
Poppy			
Marble			
Pumpernickel			
Totals: #		\$	

Sales Order

Packing Form

Name:		Phone:	
Flavor:	Qty:	Flavor:	Qty:
Plain:		Everything:	
Garlic:		Egg:	
Onion:		Sesame:	
Cinnimon/Raisin:		Poppy:	
Marble:		Pumpernickle:	
Total:		Total:	

FROM THE SOCIAL ACTION COMMITTEE - Marilyn Breslow

State funds are low this year and there are competing interests asking for public dollars. The Interfaith Center for Public Policy is organizing a rally to raise the profile of children's issues during the upcoming election and budget cycle. On October 8, from 1:00 pm to 1:45 pm there will be a Step Up for Kids gathering at the Bell Tower at Capitol Square. First Lady Anne Holton and Attorney General Bill Mims will be among the speakers. If you are concerned about Virginia's children, join this non-partisan gathering drawing attention to issues affecting America's children such as poverty, health care, juvenile incarceration, early care and education, and child abuse.

CARITAS is an interfaith effort to serve the homeless. Or Ami will be partnering with Bethany Christian Church on 5400 Forest Hill Avenue on Tuesday, October 12th, to feed 35 men. Please donate food, dollars, and/or your time. A flyer details what is needed. If you can help contact Liz Shank at eshank@cavtel.net or 320-8049.

We hope the new year services gave you some time to reflect on how you would like to get involved to Tikkun Olam. For information on options contact the social action committee: Marilyn Breslow at 272-0939 or Steve Salzberg at 360-1440.



Thanks to all of you for your donations of food at the High Holiday service. We donated over 1,700 lbs. of food to the Virginia Food Bank. Please continue to bring non-perishables to Or Ami for those struggling to feed their families.



To stay abreast of how Jewish social teaching applies to national and international issues, visit www.rac.org the website of the Religious Action Center of Reform Judaism of the Union for Reform Judaism. The site is full of information and ideas to enrich our understanding of how to live faithfully.



I have been overwhelmed with the kindness from our Congregation.

Thank you all so much for your generosity. Our dinner guests will enjoy a wonderful, healthy meal, thanks to all of you!

What a great way to begin the New Year!

Sincerely,

Liz Shank

CARITAS

PLEASE LEND A HELPING HAND

This year we will be partnering with Bethany Christian Church on 5400 Forest Hill Avenue (next to the Forest View Rescue Squad). **We will be serving dinner to approximately 35 homeless men. Our dinner will be served on Tuesday, October 12th, at 6:00 pm.** Please donate food, dollars, and/or your time. These items can be dropped off at Or Ami or my home by Saturday, October 9th. Please let me know what

you have donated (eshank@cavtel.net or 320-8049). Volunteers are needed on Tuesday, October 12th at Bethany Christian Church to prepare lunches at around 5:45 pm. This is a good opportunity to involve your children. I will also need 1 or 2 volunteers to assist with serving the meal and cleaning up 6-8:30 pm, depending on the arrival of our guests.

BEACON DEADLINES

In order to ensure that you receive your Or Ami Beacon on time, we have established monthly deadlines for submission of information to be included in the Beacon. These deadlines will be published in the Beacon several months in advance and are final — no information will be accepted after the deadline date.

The deadline for the November Beacon will be the morning of Friday, October 15th.

The deadline for the December Beacon will be the morning of Monday, November 15th.

Your articles can be faxed (272-3931) or emailed (office@or-ami.com) to the office 24 hours a day, seven days a week. Your cooperation is appreciated.

SHARE YOUR NACHAS WITH US!

Have you had something just plain old nice happen to you? Perhaps it's something spectacular like a new grandchild or a fabulous report card. Maybe it's just a day when there was nothing left TO-DO on your list. Have you received an Honor from the Rabbi? These are Shehecheyanu moments! Some are somber like a yahrzeit but important nonetheless! Share them with us at Or Ami not only in word but by bringing something to Oneg. Let's start a tradition of sharing birthday cake or homemade pie together. Perhaps your moment will be spending the time with your child to make cookies, or cupcakes, or something for Oneg. It is just one more dimension of who we are and how we can come together and share your special moment! (And don't worry if too many people bring, that there will be too much! There's no such thing as too much dessert!)



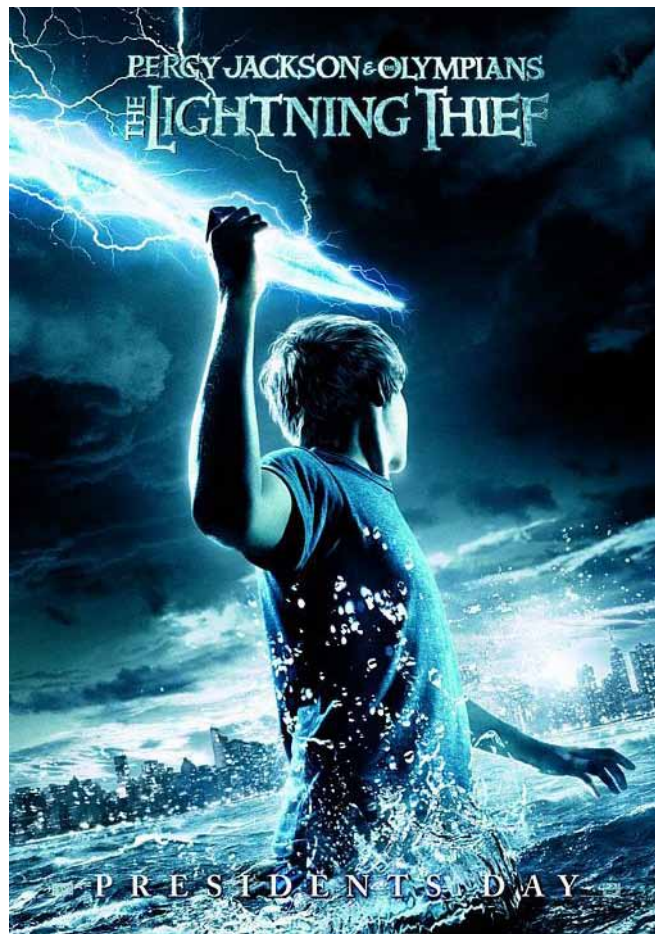
MOVIE NIGHT AT OR AMI

**INTRODUCING OR AMI'S PEERLESS
POTLUCK PIZZA PARTY AND CINEPLEX!**

SATURDAY, OCTOBER 16, 6:30 PM

"**PERCY JACKSON AND THE OLYMPIANS - THE LIGHTNING THIEF**"

Greek mythology meets Manhattan as Percy discovers that he is the son of a Greek god and must recover Zeus' stolen lightning bolt to stop a war between the gods that could destroy the world. Did you know that the entrance to Mt. Olympus is on the 600th floor of the Empire State Building? You may recognize Pierce Brosnan and Uma Thurman in supporting roles in this action adventure. Rated PG. Fun for the whole family!



**PLEASE BRING PIZZA OR SALAD TO SHARE.
DRINKS AND OTHER MUNCHIES WILL BE
THERE.**

**AS ALWAYS FREE ADMISSION AND LARGE
WIDESCREEN FORMAT, BECAUSE WE CARE!**

PLEASE VOLUNTEER FOR 45 MINUTES ON A FRIDAY NIGHT

It's possible you told us to just ask you to volunteer – especially if it is something you know how to do. Possibly you're the type who will volunteer only when there is something "in it" for you. Here's something for both.

You are experienced in saying "hello" or "good evening". For being able to do it over a 45 minute period while you hand out liturgy and programs to those who arrive for Shabbat worship, you have all the expertise you need.

What's in it for you? You may

meet new people. Also, you joined Or Ami to be a part of a community and have felt the welcome provided by Or Ami Meeter/Greeters (which sets us apart from almost every other synagogue). You'll feel



good as you let people who come through our doors know that Or Ami recognizes they are here and we are glad they have come – just as we are glad you are here.

Okay, here's your "ask". Email or call Jon Berlinerman (jonberlinerman@hotmail.com; 741-0489) to arrange to volunteer for an upcoming Friday night as one of the Meeter/Greeters. That's the hardest part. Please do it today!

A few days prior to your chosen date(s) an email or phone reminder will be provided.

COMMUNITY NEWS



RICHMOND FOLK MUSIC SOCIETY

“Bringing the finest traditional folk music to Richmond, Virginia”
The Richmond Folk Music Society is a not for profit organization dedicated to preserving and encouraging traditional folk music. From September through May, we present monthly acoustic concerts featuring a variety of traditional music styles.

2010-2011 CONCERT SCHEDULE

October 30, 2010	Andrew Calhoun “Bound to Go” – A Journey in Traditional Song	\$12.00/\$15.00
November 20, 2010	Sheila Stewart Songs and Ballads of Scotland’s Travelling People	\$12.00/\$15.00
December 18, 2010	“Celtic Klezmer” Winter Revels ! Klezm’Or’Ami’m and Turf Fire	Fund Raiser for Congregation Or Ami Ticket Price TBA
January 29 th , 2011	Balkanize Turco-Balkan Dance Music	\$12.00/\$15.00
February 26, 2011	Aloha Y’all Hawaiian Echoes in American Music Gregg Kimball, Ron Curry and Charles Arthur	\$12.00/\$15.00
March 26, 2011	Skip Gorman Cowboys and Campfires Musical Heritage of the Wild West	\$12.00/\$15.00
April 30, 2011	Rick Franklin Traditional Piedmont Blues	\$12.00/\$15.00
May 21, 2011	Ulster Spirit ! From the Glens of Antrim to the Hills of the Blue Ridge Chris Caldwell and Steve Mulholland	\$12.00/\$15.00

Concerts held at Congregation Or Ami, 9400 W. Huguenot Rd., Richmond , VA. For more information or to purchase/reserve tickets visit www.richmondfolkmusic.com or call 804-647-7856. Doors open at 7:15, concerts starts at 8:00.



Did you know Or Ami has a Facebook page? Search for us at "Or Ami" and request to join. We are hoping to start making good use of this page.



PLEASE DONATE!

Please continue to remember those with insufficient income faced with high food costs, and bring non-perishables to the synagogue for the Food Bank.



GIFT SHOP

We have a beautiful selection of gifts for Shabbat, Bar/Bat Mitzvahs, weddings, births, Hanukkah, and more. Mezuzahs, candlesticks, Kiddush cups, and jewelry are just some of the items we carry. Items not found in our Gift Shop can be ordered. Catalogs are available for you to view. Contact Renee Gould.

EXCLUSIVE TO OR AMIANS...RENT-A YENTA

Or Ami yentas now offering full service Bar/Bat Mitzvah party and event services. Sit back and relax as we craft exquisite, handmade decorations, arrange artful presentations, and make sure that your SIMCHA is SPECTACULAR.

For more information, please call Dell at 741-0489

Many Thanks to Bobby Silver and Cavalier Construction & Remodeling Co., Inc. (804) 342-1000 for all the repair work they do at Or Ami.



2010 ENTERTAINMENT BOOKS

The 2010 Entertainment Books are here!

For more information and to purchase an Entertainment Book, please call the Temple office at 272-0017.

Buy a 2010 Entertainment Book and support Or Ami at the same time!



MEMBERSHIP LISTS

Membership Lists (April 2010) are available on the racks on the wall outside the Sanctuary. If you are unable to come to the Temple to pick one up, call Maria in the office and she will mail one to you.

More Simchat Torah Pictures



Tree of Life **DONATION FORM**

Use this form to make a donation to Congregation Or Ami's building fund through participation in the "Tree of Life." Leaves may be used to mark a life cycle event, to remember a family member or friend, or to honor an individual's accomplishments. A good way to remember someone special who has passed away, is to note a significant accomplishment or their dedication to family, friends, an organization, or career. Each leaf may include up to four lines, however, three

lines are recommended for the best spacing between lines. The top and bottom lines may have about 19 letters and spaces, and the middle lines may have about 23 letters and spaces. These numbers may vary depending on the lettering used. (For example, a "W" takes up more space and an "I.") The leaf is approximately 3¼ inches long by 1½ inches wide, and is a "brushed gold" color. Below are four examples:

**IN HONOR OF
RUTH GOLDSTEIN'S
COMMITMENT TO OR AMI**

**BAR MITZVAH OF
MICHAEL SMITH
APRIL 15, 1996**

**IN HONOR OF
DR. DAVID M. COHEN'S
25 YEARS OF SERVICE
TO MEDICINE**

**25TH WEDDING
ANNIVERSARY OF
HARRY AND BETTY LEVY
JULY 12, 1993**



Please fill in the information below:

Line 1: _____

Line 2: _____

Line 3: _____

Line 4: _____

Your Name:

Address:

Telephone: Email:

Donation per leaf is \$200. Three leaves may be requested for a donation of \$500.

***Send completed forms and payment to:
Congregation Or Ami
9400 Huguenot Road
Richmond, Virginia 23235***

Congregation Or Ami's Board of Directors reserves the right to edit requests, upon consultation with the donor.



Congregation Or Ami

"A Dynamic Sacred Community Grounded in Reform Judaism."

9400 Huguenot Road | Richmond, VA 23235 | (804) 272-0017

www.or-ami.com

NON-PROFIT ORG.
U.S. POSTAGE PAID
RICHMOND, VA
PERMIT #261

Return Service Requested



Dr. Ben Romer, Rabbi

Alan Freedman, Co-President

Judy Katzen, Co-President

Elaine Ragone, Cantorial Soloist Emerita

David Goldsmith, Director of Education

Affiliated with the Union for Reform Judaism

The Or Ami Beacon Issue 177 - October 2010

